

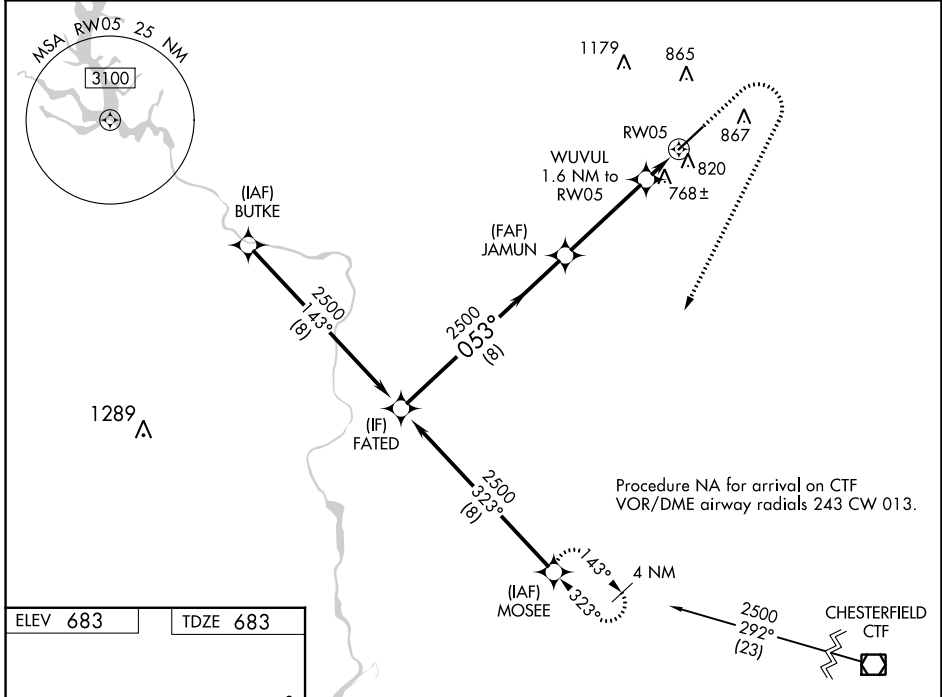
WAAS CH 66002 W05A	APP CRS 053°	Rwy Idg TDZE Apt Elev	7001 683 683
--	------------------------	-----------------------------	---

RNAV (GPS) RWY 5

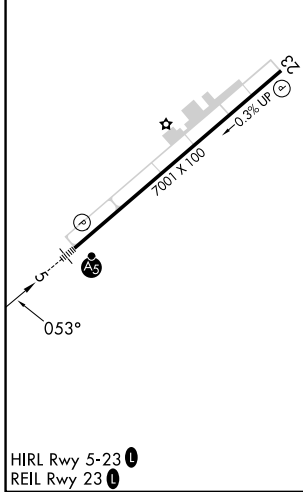
CHARLOTTE/MONROE EXEC (EQY)

RNP APCH-GPS.		MALSR	MISSED APPROACH: Climb to 1140 then climbing right turn to 2500 direct MOSEE and hold.
<p>⚠ Rwy 5 helicopter visibility reduction below 3/4 SM NA. For uncompensated Baro-VNAV systems, LNAV/VNAV NA below -7°C or above 54°C. Inop table does not apply to LPV all Cats. For inop ALS, increase LNAV/VNAV all Cats visibility to 3/8 SM and LNAV all Cats visibility to 1 SM.</p>			

ASOS 135.775	CHARLOTTE APP CON 120.05 307.8	CLNC DEL 132.55	UNICOM 122.7 (CTAF)
------------------------	--	---------------------------	-------------------------------



ELEV 683	TDZE 683
----------	----------



	FATED	JAMUN	WUVUL 1.6 NM to RW05	
	2500	2500	1220	
	GP 3.00° TCH 46	053°	0.9 NM to RW05	
	8 NM	4 NM	0.7 NM	0.9 NM
CATEGORY	A	B	C	D
LPV DA		933-3/4	250 (300-3/4)	
LNAV/VNAV DA		1001-3/4	318 (400-3/4)	
LNAV MDA		1020-3/4	337 (400-3/4)	
CIRCLING	1220-1	537 (600-1)	1220-1 1/2 537 (600-1 1/2)	1480-2 1/2 797 (800-2 1/2)

SE-2, 28 NOV 2024 to 26 DEC 2024

SE-2, 28 NOV 2024 to 26 DEC 2024