

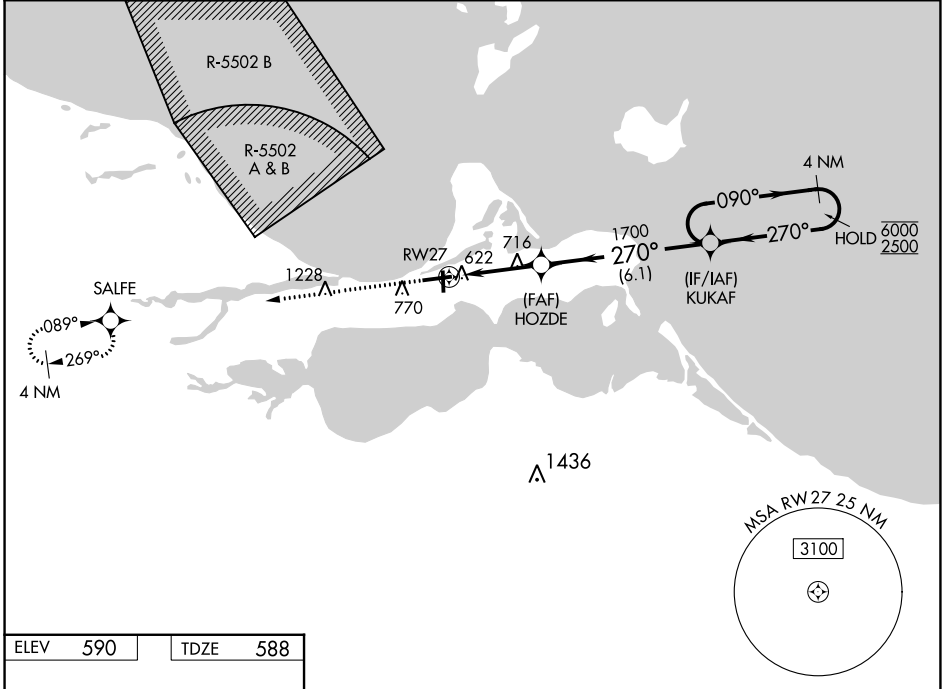
WAAS CH <b>58012</b> <b>W27A</b>	APP CRS <b>270°</b>	Rwy ldg <b>5445</b>
		TDZE <b>588</b>
		Apt Elev <b>590</b>

# RNAV (GPS) RWY 27

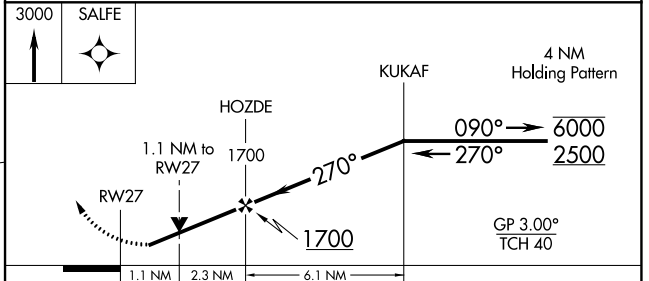
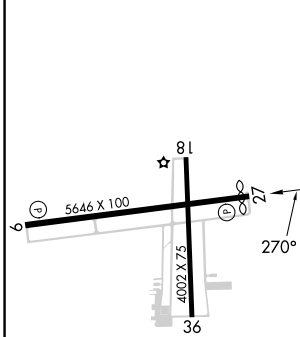
ERIE-OTTAWA INTL (PCW)

RNP APCH - GPS.	MISSED APPROACH: Climb to 3000 direct SALFE and hold.
<p>▼ Circling Rwy 18, 36 NA at night. Rwy 27 helicopter visibility reduction below 1 SM NA.</p> <p>▲ For uncompensated Baro-VNAV systems, LNAV/VNAV NA below -16°C or above 54°C.</p>	

AWOS-3 <b>118.775</b>	CLEVELAND APP CON <b>126.35 346.325</b>	UNICOM <b>122.8 (CTAF) 0</b>
--------------------------	--	---------------------------------



ELEV 590	TDZE 588
----------	----------



CATEGORY	A	B	C	D
LPV DA		842-1	254 (300-1)	
LNAV/VNAV DA		969-1½	381 (400-1½)	
LNAV MDA	980-1	392 (400-1)	980-1½	392 (400-1½)
<input checked="" type="checkbox"/> CIRCLING	1140-1	550 (600-1)	1180-1½ 590 (600-1½)	1580-3 990 (1000-3)

HIRL Rwy 9-27 0  
MIRL Rwy 18-36 0  
REL Rwy 9 and 27 0

EC-2, 28 NOV 2024 to 26 DEC 2024

EC-2, 28 NOV 2024 to 26 DEC 2024