

APP CRS	Rwy Idg	<b>5646</b>
<b>090°</b>	TDZE	<b>590</b>
	Apt Elev	<b>590</b>

# RNAV (GPS) RWY 9

ERIE-OTTAWA INTL (PCW)

RNP APCH - GPS.

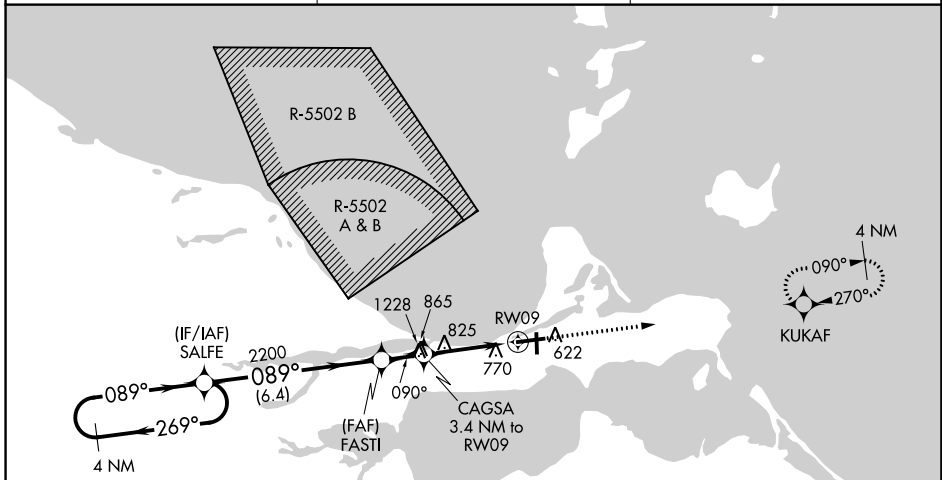
**⚠** When local altimeter setting not received, use Toledo Executive altimeter setting and increase all MDA 80 feet and all Cat C/D visibilities ¼ mile. Rwy 9 helicopter visibility reduction below ¾ SM NA. Circling Rwy 18, 36 NA at night.

**MISSED APPROACH:**  
Climb to 2500 direct KUKAF and hold.

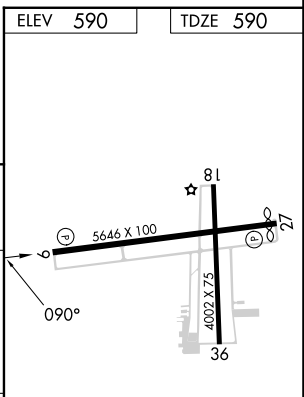
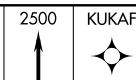
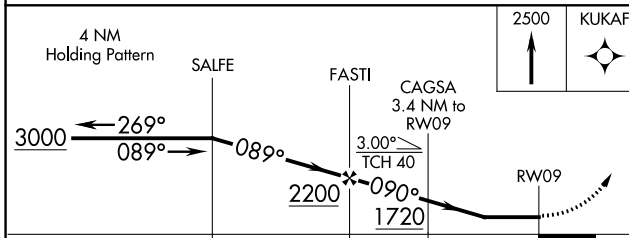
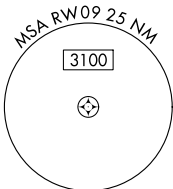
AWOS-3  
**118.775**

CLEVELAND APP CON  
**126.35 346.325**

UNICOM  
**122.8 (CTAF) 0**



**A 1436**



CATEGORY	A	B	C	D
LNVA MDA	1140-1	550 (600-1)	1140-1½	550 (600-1½)
<b>C</b> CIRCLING	1140-1	550 (600-1)	1180-1½ 590 (600-1½)	1580-3 990 (1000-3)

HIRL Rwy 9-27 **0**  
MIRL Rwy 18-36 **0**  
REIL Rws 9 and 27 **0**

EC-2, 28 NOV 2024 to 26 DEC 2024

EC-2, 28 NOV 2024 to 26 DEC 2024