

(MEARZ7.MEARZ) 23334

# MEARZ SEVEN DEPARTURE

AL-5733 (FAA)

EAGLE CREEK AIRPARK (EYE)  
INDIANAPOLIS, INDIANA

**TOP ALTITUDE:  
ASSIGNED BY ATC**

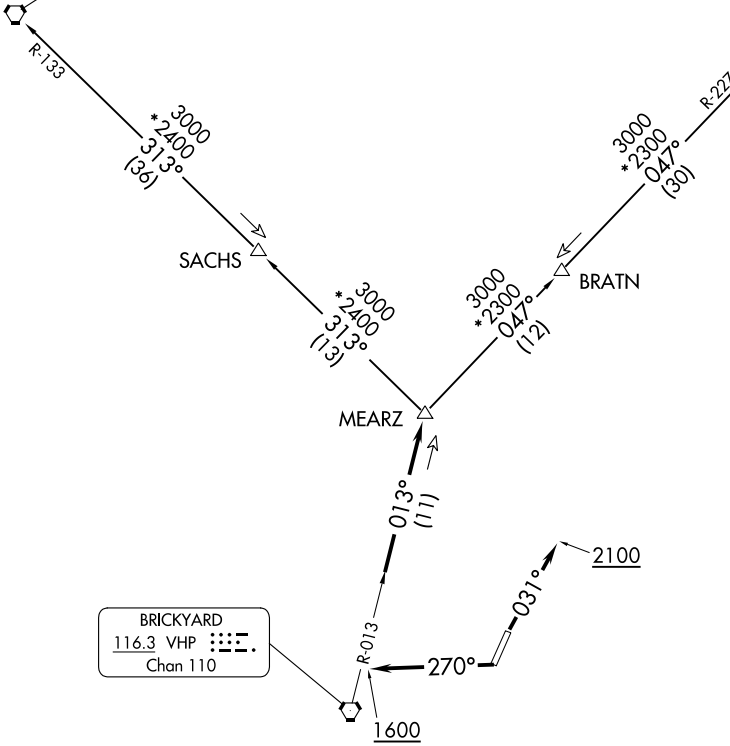
RADAR required.

ASOS  
121.575  
CLNC DEL  
128.6  
INDIANAPOLIS DEP CON  
119.05 317.8

BOILER  
115.1 BVT  
Chan 98

MARION  
108.6 MZZ  
Chan 23

BRICKYARD  
116.3 VHP  
Chan 110

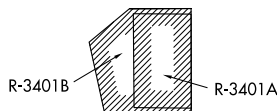


### TAKEOFF MINIMUMS

Rwy 3, 21: Standard.

- NOTE: Turbojets accelerate to 250K until reaching 10000, if unable advise ATC.
- NOTE: Assigned to aircraft with a requested altitude of 11000 or above.
- NOTE: Select appropriate localizer/DME frequency/channel prior to departure.

(NARRATIVE ON FOLLOWING PAGE)



NOTE: Chart not to scale.

EC-2, 28 NOV 2024 to 26 DEC 2024

EC-2, 28 NOV 2024 to 26 DEC 2024

# MEARZ SEVEN DEPARTURE

(MEARZ7.MEARZ) 19MAY22

INDIANAPOLIS, INDIANA  
EAGLE CREEK AIRPARK (EYE)