

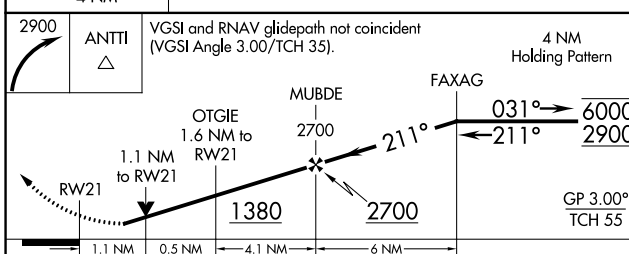
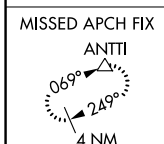
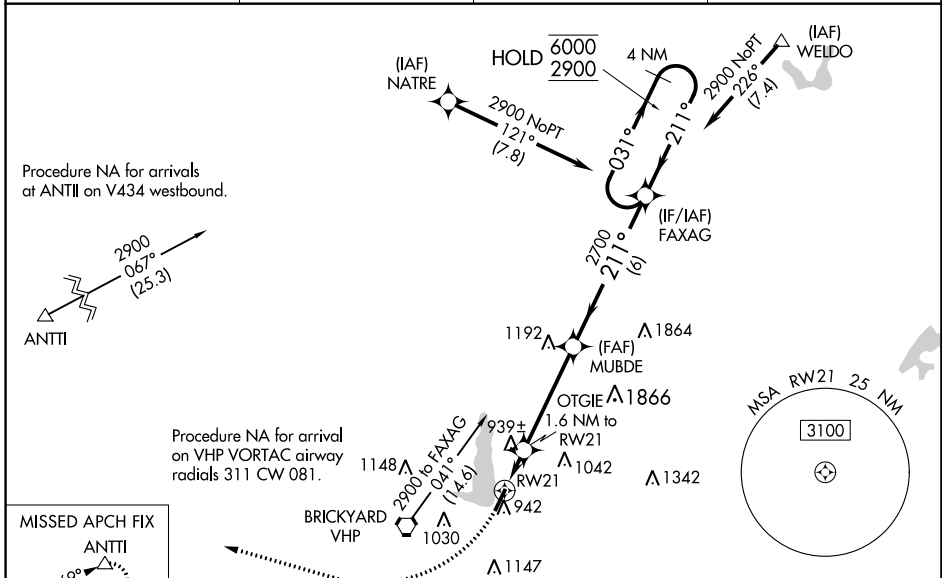
WAAS CH 82509 W21A	APP CRS 211°	Rwy Idg TDZE Apt Elev	4200 823 823
--	------------------------	-----------------------------	---

RNAV (GPS) RWY 21

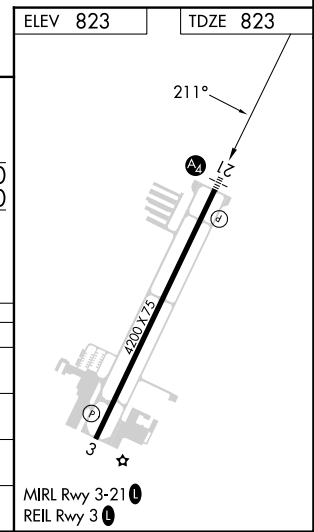
EAGLE CREEK AIRPARK (EYE)

RNP APCH - GPS.		MALS	MISSED APPROACH: Climbing right turn to 2900 direct ANTTI and hold.
<p>⚠ Rwy 21 helicopter visibility reduction below 3/4 SM NA. Baro-VNAV and VDP NA when using Indianapolis Intl altimeter setting. For uncompensated Baro-VNAV systems, LNAV/VNAV NA below 0°C or above 54°C. Inop table does not apply. When local altimeter setting not received, use Indianapolis Intl altimeter setting and increase all MDAs 20 feet.</p>			

ASOS 121.575	INDIANAPOLIS APP CON 119.05 317.8	CLNC DEL 128.6	UNICOM 122.8 (CTAF)
------------------------	---	--------------------------	-------------------------------



CATEGORY	A	B	C	D
LPV DA	1091-1	268 (300-1)		NA
LNAV/VNAV DA	1076-1	253 (300-1)		NA
LNAV MDA	1200-1	377 (400-1)		NA
CIRCLING	1320-1	497 (500-1)	1500-2 677 (700-2)	NA



EC-2, 28 NOV 2024 to 26 DEC 2024

EC-2, 28 NOV 2024 to 26 DEC 2024