

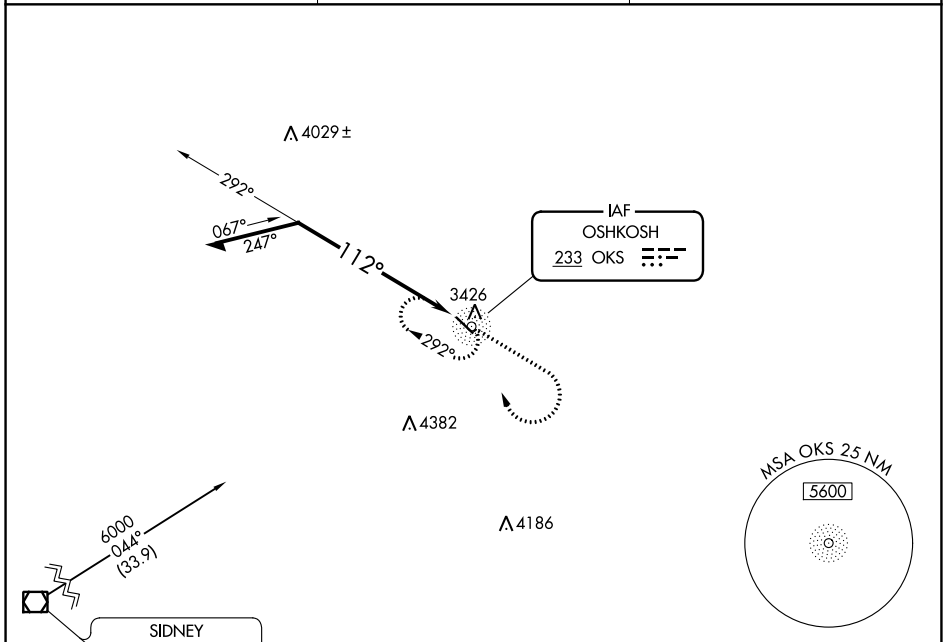
NDB OKS 233	APP CRS 112°	Rwy Idg TDZE Apt Elev	4699 3394 3394
-----------------------	------------------------	-----------------------------	---

NDB RWY 12

GARDEN COUNTY/KING RHILEY FLD (OKS)

<p>Use Ogallala altimeter setting.</p>	<p>MISSED APPROACH: Climb to 5600 then right turn direct OKS NDB and hold.</p>
--	--

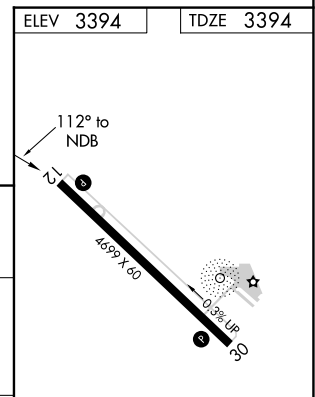
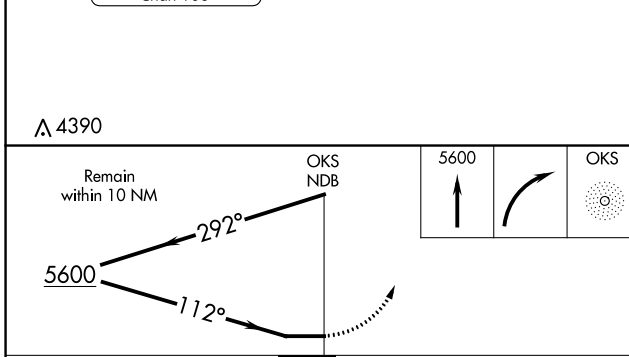
OGA AWOS-3 121.275	DENVER CENTER 118.475 225.4	UNICOM 122.8 (CTAF) 1
------------------------------	---------------------------------------	---------------------------------



NC-2, 28 NOV 2024 to 26 DEC 2024

NC-2, 28 NOV 2024 to 26 DEC 2024

ELEV 3394	TDZE 3394
-----------	-----------



CATEGORY	A	B	C	D
S-12	4600-1¼ 1206 (1300-1¼)	4600-1½ 1206 (1300-1½)	NA	
CIRCLING	4600-1¼ 1206 (1300-1¼)	4600-1½ 1206 (1300-1½)	NA	

REIL Rwy 12 and 30 1
MIRL Rwy 12-30 1