

(INDIE8.INDIE) 21280

AL-5757 (FAA)

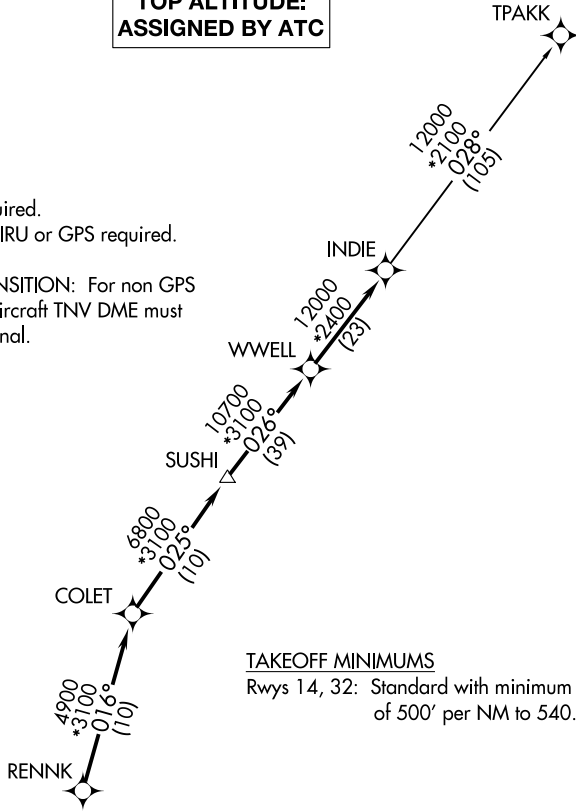
BAYTOWN (HPY)
BAYTOWN, TEXAS

INDIE EIGHT DEPARTURE (RNAV)

CTAF
122.8
HOUSTON DEP CON
134.45 284.0

**TOP ALTITUDE:
ASSIGNED BY ATC**

- NOTE: RADAR required.
- NOTE: DME/DME/IRU or GPS required.
- NOTE: RNAV 1.
- NOTE: TPAKK TRANSITION: For non GPS equipped aircraft TNV DME must be operational.



TAKEOFF MINIMUMS

Rwys 14, 32: Standard with minimum climb of 500' per NM to 540.

SC-5, 28 NOV 2024 to 26 DEC 2024

SC-5, 28 NOV 2024 to 26 DEC 2024

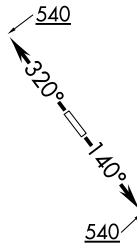
DEPARTURE ROUTE DESCRIPTION

TAKEOFF RUNWAY 14: Climb on heading 140° to 540 for RADAR vectors to RENNK, thence . . .

TAKEOFF RUNWAY 32: Climb on heading 320° to 540 for RADAR vectors to RENNK, thence . . .

. . . on track 016° to COLET, then on track 025° to SUSHI, then on track 026° to WWELL, then on track 026° to INDIE, then on (transition). Maintain ATC assigned altitude. Expect filed altitude 10 minutes after departure.

TPAKK TRANSITION (INDIE8.TPAKK)



NOTE: Chart not to scale.

INDIE EIGHT DEPARTURE (RNAV)

(INDIE8.INDIE) 07OCT21

BAYTOWN, TEXAS
BAYTOWN (HPY)