

# KARR SEVEN DEPARTURE (RNAV)

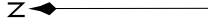
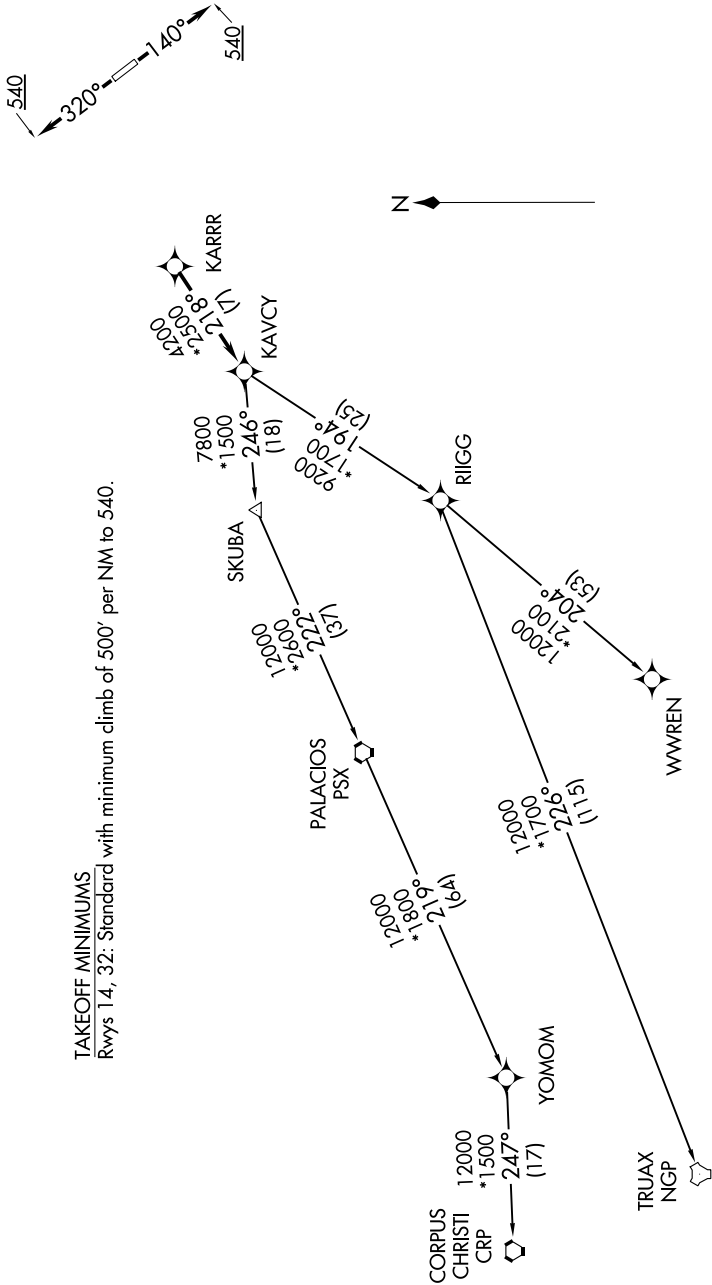
**TOP ALTITUDE:  
ASSIGNED BY ATC**

RNAV-1 DME/DME/IRU or GPS.  
RADAR required.

CTAF  
122.8  
HOUSTON DEP CON  
134.45 284.0

SC-5, 28 NOV 2024 to 26 DEC 2024

**TAKEOFF MINIMUMS**  
Rwy 14, 32: Standard with minimum climb of 500' per NM to 540.



NOTE: Chart not to scale.

(NARRATIVE ON FOLLOWING PAGE)

SC-5, 28 NOV 2024 to 26 DEC 2024

# KARR SEVEN DEPARTURE (RNAV)