

VOR/DME SCB	APP CRS	Rwy Idg	<b>4650</b>
<b>111.0</b>	<b>147°</b>	TDZE	<b>1204</b>
Chan <b>47</b>		Apt Elev	<b>1204</b>

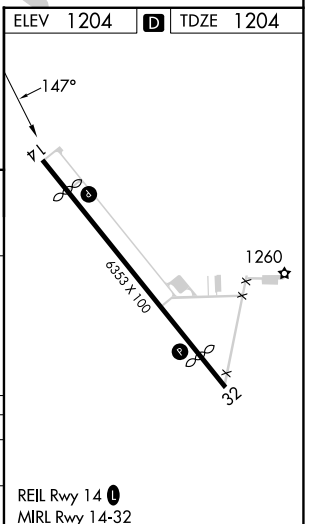
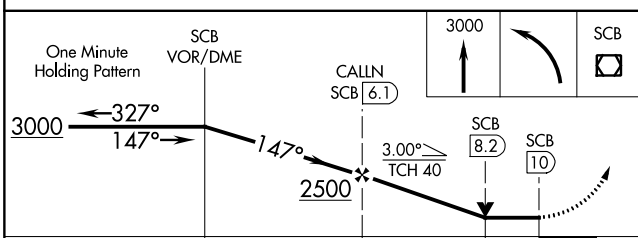
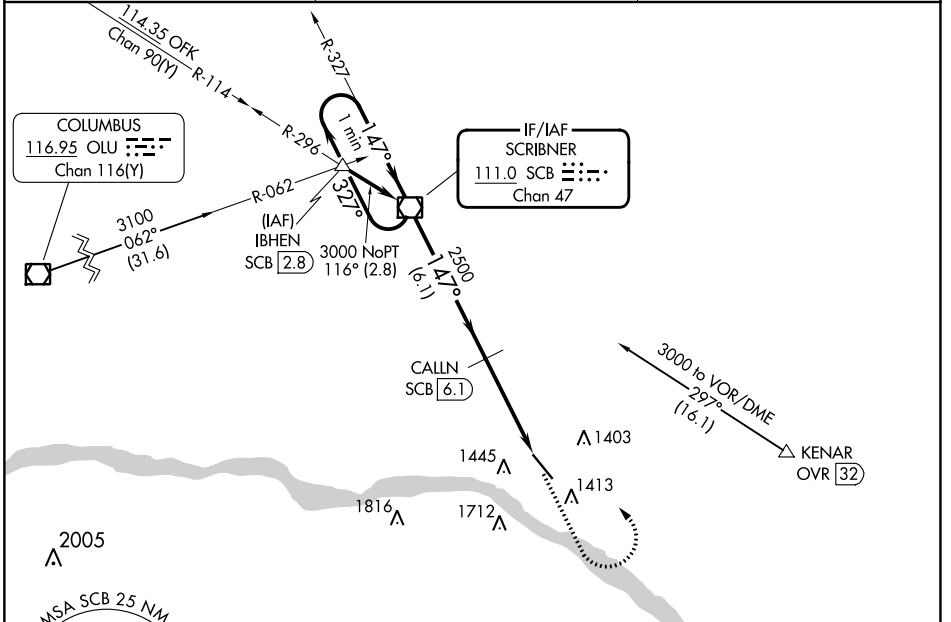
# VOR RWY 14

FREMONT MUNI (F/E/T)

**V** VDP NA with Blair altimeter setting. Rwy 14 helicopter visibility reduction below 1 SM NA. When local altimeter setting not received, use Blair altimeter setting and increase all MDA 60 feet; increase S-14 Cat C visibility 1/8 mile. DME required.

**NA** MISSED APPROACH: Climb to 3000 then left turn direct SCB VOR/DME and hold.

AWOS-3 <b>121.275</b>	OMAHA APP CON <b>120.1 354.05</b>	UNICOM <b>122.8 (CTAF) 0</b>
--------------------------	--------------------------------------	---------------------------------



CATEGORY	A	B	C	D
S-14	1820-1	616 (700-1)	1820-1 3/4 616 (700-1 3/4)	NA
<b>C</b> CIRCLING	1820-1	616 (700-1)	2020-2 1/2 816 (900-2 1/2)	NA

NC-2, 28 NOV 2024 to 26 DEC 2024

NC-2, 28 NOV 2024 to 26 DEC 2024