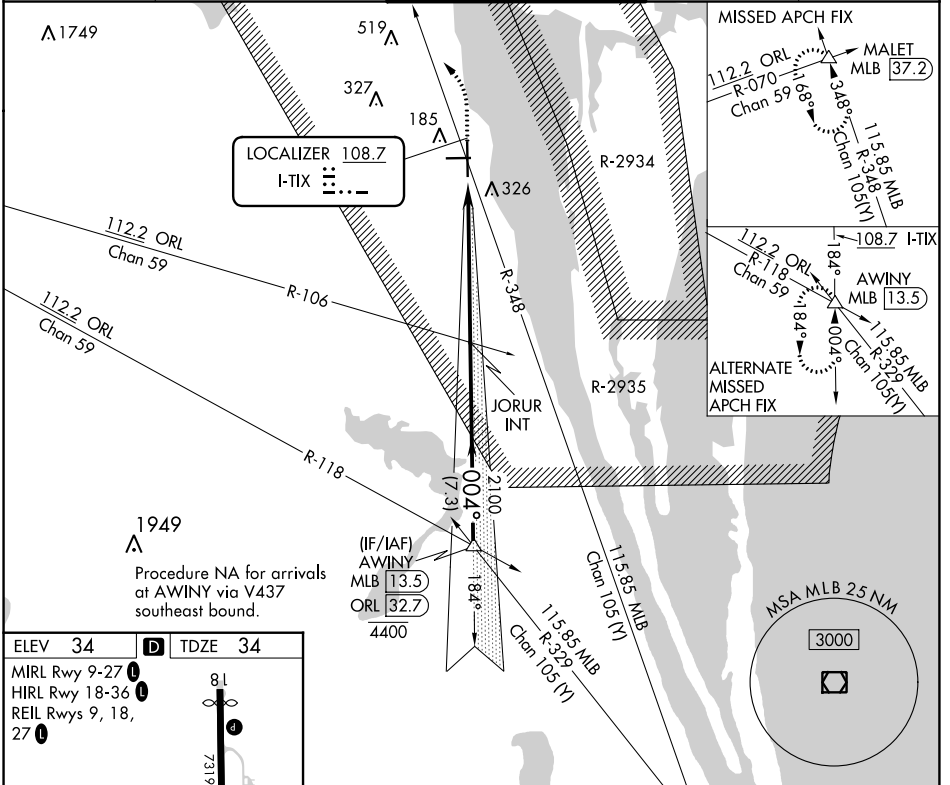


LOC I-TIX 108.7	APP CRS 004°	Rwy Idg 7244
		TDZE 34
		Apt Elev 34

ILS or LOC RWY 36

SPACE COAST RGNL (TIX)

<p>For inop ALS, increase S-LOC 36 Cat C/D visibility to 1 3/8 SM.</p>	MALSR	MISSED APPROACH: Climb to 500 then climbing left turn to 2000 on MLB VOR/DME R-348 to MALET INT/37.2 DME and hold.		
ATIS 120.625	ORLANDO APP CON 134.95 281.425	SPACE COAST TOWER * 118.9 (CTAF)	GND COM 121.85	UNICOM 122.95



SE-3, 28 NOV 2024 TO 26 DEC 2024

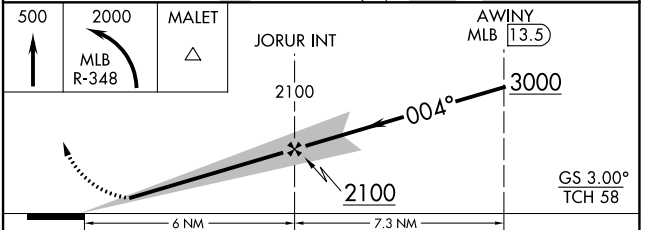
SE-3, 28 NOV 2024 TO 26 DEC 2024

ELEV 34	D	TDZE 34
MIRL Rwy 9-27		
HIRL Rwy 18-36		
REIL Rwys 9, 18, 27		

004° 6 NM from FAF

FAF to MAP 6 NM

Knots	60	90	120	150	180
Min:Sec	6:00	4:00	3:00	2:24	2:00



CATEGORY	A	B	C	D
S-ILS 36	234-1/2 200 (200-1/2)			
S-LOC 36	500-1/2	466 (500-1/2)	500-1	466 (500-1)
CIRCLING	640-1	606 (700-1)	640-3/4 606 (700-3/4)	640-2 606 (700-2)