

LOC/DME I-KOA	APP CRS	Rwy Idg	<b>11000</b>
<b>109.7</b>	<b>174°</b>	TDZE	<b>47</b>
Chan 34		Apt Elev	<b>47</b>

# ILS or LOC RWY 17

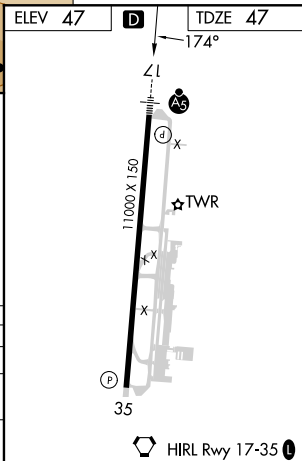
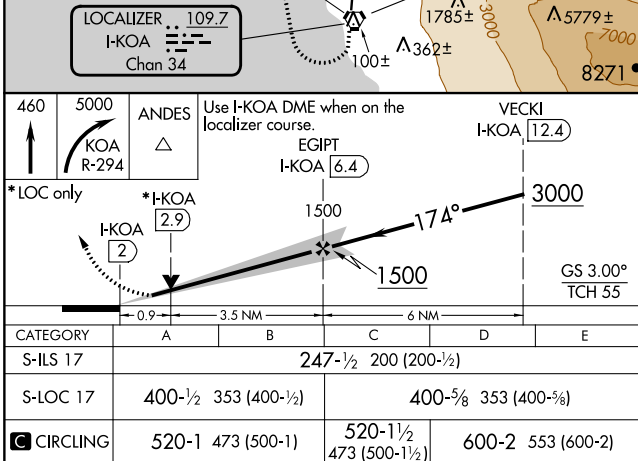
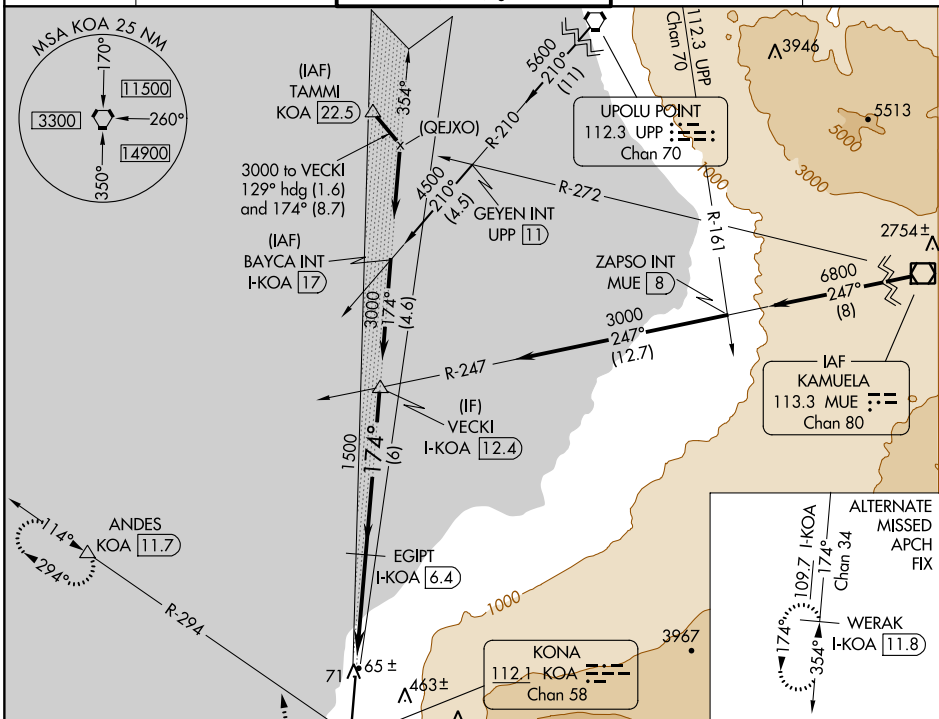
ELLISON ONIZUKA KONA INTL AT KEAHOLE (KOA)(PHKO)

**⚠** For inoperative MALSR, increase S-ILS 17 Cat E visibility to 3/4 mile and S-LOC 17 Cats C, D, E visibility to 1 mile. Circling NA east of Rwy 17-35. Autopilot coupled approach NA below 415. DME required.



**MISSED APPROACH:** Climb to 460 then climbing right turn to 5000 on KOA VORTAC R-294 to ANDES/KOA VORTAC 11.7 DME and hold, continue climb-in-hold to 5000.

ATIS	HCF CENTER	KONA TOWER*	GND CON	CLNC DEL
<b>127.4</b>	<b>118.45 278.3</b>	<b>120.3(CTAF) 0 254.3</b>	<b>121.9</b>	<b>118.6</b>



PAC, 31 OCT 2024 to 26 DEC 2024

PAC, 31 OCT 2024 to 26 DEC 2024