

WAAS CH 66028 W27A	APP CRS 274°	Rwy Idg TDZE Apt Elev	3882 777 781
--	------------------------	-----------------------------	---

RNAV (GPS) RWY 27

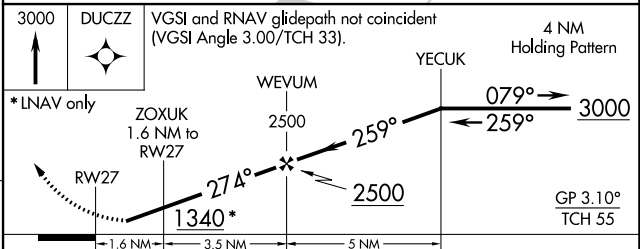
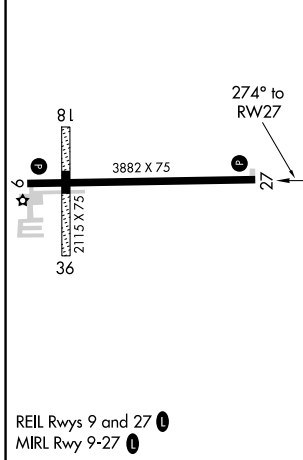
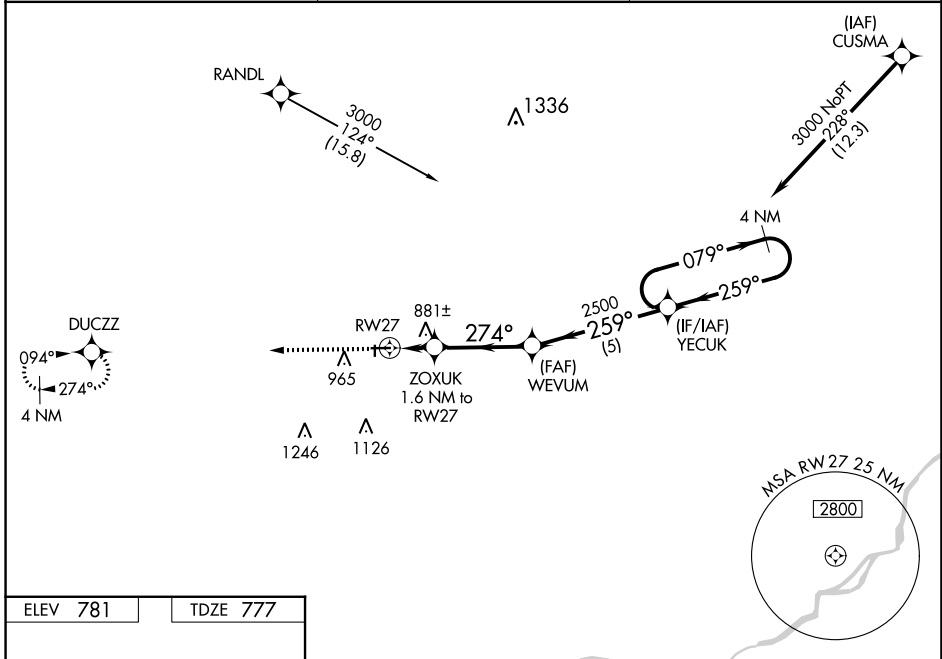
FULTON COUNTY (USE)

RNP APCH - GPS.

▼ For uncompensated Baro-VNAV systems, LNAV/VNAV NA below -16°C or above 54°C. Circling NA to Rwy 18 and 36. Rwy 27 helicopter visibility reduction below 1 SM NA. Procedure NA at night.

MISSED APPROACH:
Climb to 3000 direct DUCZZ and hold.

AWOS-3P 127.375	TOLEDO APP CON 134.35 317.55	UNICOM 123.0 (CTAF)
---------------------------	--	-------------------------------



CATEGORY	A	B	C	D
LPV DA	1092-1		315 (400-1)	
LNAV/VNAV DA	1095-1		318 (400-1)	
LNAV MDA	1180-1	403 (400-1)	1180-1½	403 (400-1½)
CIRCLING	1320-1	539 (600-1)	1480-2 699 (700-2)	1480-2¼ 699 (700-2¼)

EC-2, 28 NOV 2024 to 26 DEC 2024

EC-2, 28 NOV 2024 to 26 DEC 2024