

WAAS CH 73027 W36A	APP CRS 359°	Rwy Idg 5210 TDZE 74 Apt Elev 75
--	------------------------	---

RNAV (GPS) RWY 36

ST LANDRY PARISH (OPL)

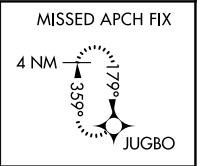
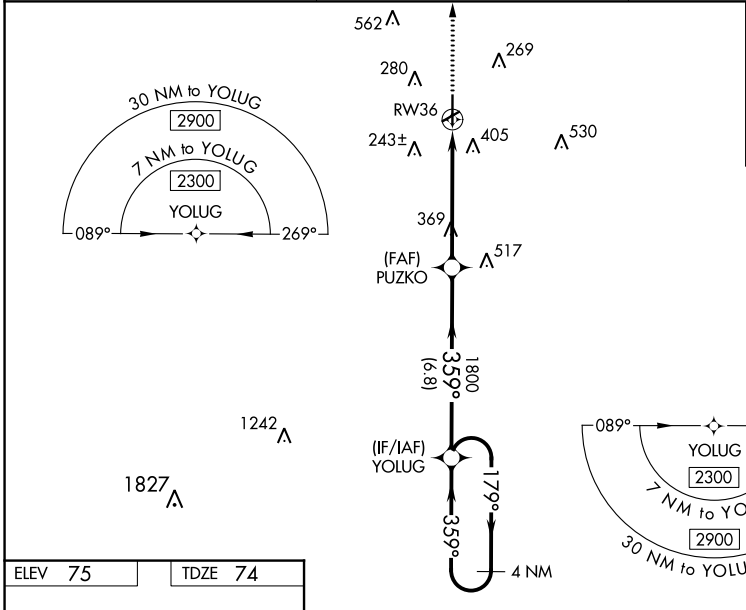
NA Baro-VNAV NA when using Lafayette altimeter setting. For uncompensated Baro-VNAV systems, LNAV/VNAV NA below -15°C (5°F) or above 43°C (109°F). When VGSI inop, Straight-in/Circling Rwy 36 procedure NA at night. DME/DME RNP-0,3 NA. Visibility reduction by helicopters NA. Circling to Rwy 6/24 NA at night. When local altimeter setting not received, use Lafayette altimeter setting: Increase LPV DA to 407 feet, LNAV/VNAV DA to 749 feet, and visibility LPV all Cats ½ SM and LNAV/VNAV all Cats ¼ SM; increase all MDA 60 feet and visibility LNAV Cats C and D ½ SM and Circling Cat C and D ¼ SM.

MISSED APPROACH: Climb to 2000 direct JUGBO and hold.

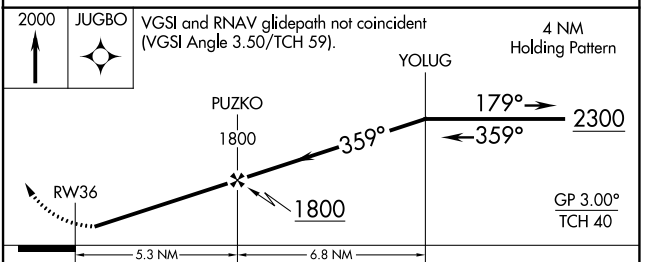
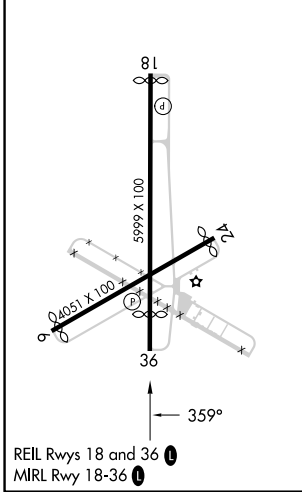
AWOS-3PT
118.775

LAFAYETTE APP CON★
128.7 268.7

UNICOM
123.0 (CTAF) 0



ELEV 75	TDZE 74
---------	---------



CATEGORY	A	B	C	D
LPV DA	351-1		277 (300-1)	
LNAV/VNAV DA	693-2¼		619 (700-2¼)	
LNAV MDA	620-1	546 (600-1)	620-1½	546 (600-1½)
CIRCLING	780-1	705 (800-1)	780-2 705 (800-2)	920-2¾ 845 (900-2¾)

SC-4, 28 NOV 2024 to 26 DEC 2024

SC-4, 28 NOV 2024 to 26 DEC 2024