

| | | |
|--|------------------------|---|
| WAAS CH 70517 W21A | APP CRS 209° | Rwy Idg 4400 TDZE 416 Apt Elev 416 |
|--|------------------------|---|

RNAV (GPS) RWY 21

FARMVILLE RGNL (FVX)

RNP APCH-GPS.

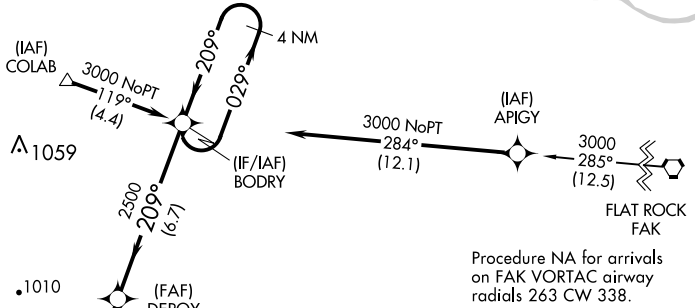
⚠ Baro-VNAV NA when using Lynchburg Rgnl/Preston Glenn Fld altimeter setting. For uncompensated Baro-VNAV systems, LNAV/VNAV NA below -15°C or above 54°C. When local altimeter setting not received, use Lynchburg Rgnl/Preston Glenn Fld altimeter setting and increase LPV DA to 854 feet and all visibilities ¼ SM, increase LNAV/VNAV DA to 1024 feet and all visibilities ⅓ SM, increase all MDAs 160 feet and LNAV visibility Cat C ⅓ SM. Circling Rwy 3 NA at night. Rwy 21 helicopter visibility reduction below 1 SM NA.

MISSED APPROACH:
Climb to 3000 direct WAMPO and hold.

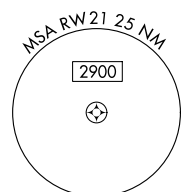
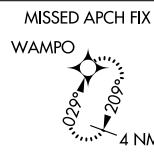
AWOS-3
132.725

ROANOKE APP CON
135.0 254.325

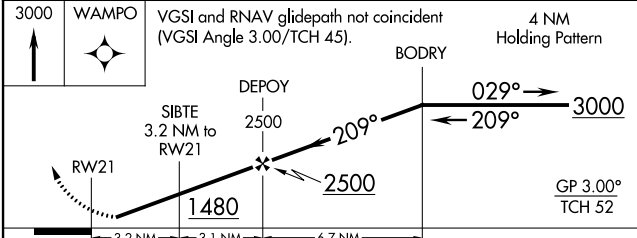
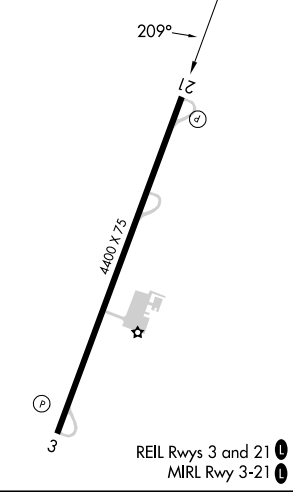
UNICOM
122.8 (CTAF)



Procedure NA for arrivals on FAK VORTAC airway radials 263 CW 338.



ELEV 416 TDZE 416



| CATEGORY | A | B | C | D |
|--------------|--------|-------------|-------------------------|----|
| LPV DA | 696-1 | | 280 (300-1) | NA |
| LNAV/VNAV DA | 866-1⅓ | | 450 (500-1⅓) | NA |
| LNAV MDA | 860-1 | 444 (500-1) | 860-1⅓ 444 (500-1⅓) | NA |
| CIRCLING | 900-1 | 484 (500-1) | 1000-1½ 584 (600-1½) | NA |

NE-3, 28 NOV 2024 to 26 DEC 2024

NE-3, 28 NOV 2024 to 26 DEC 2024