

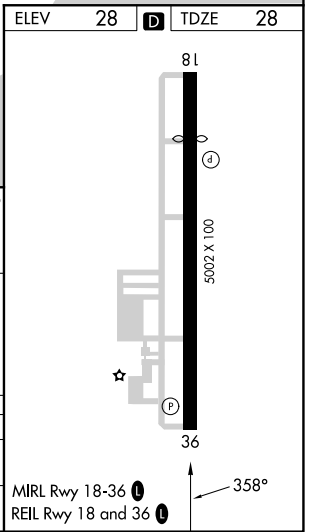
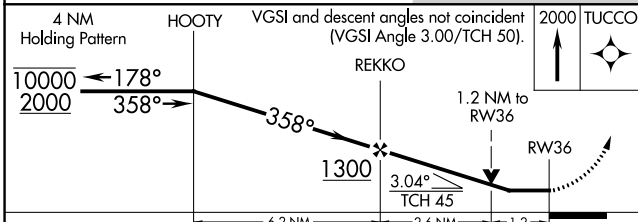
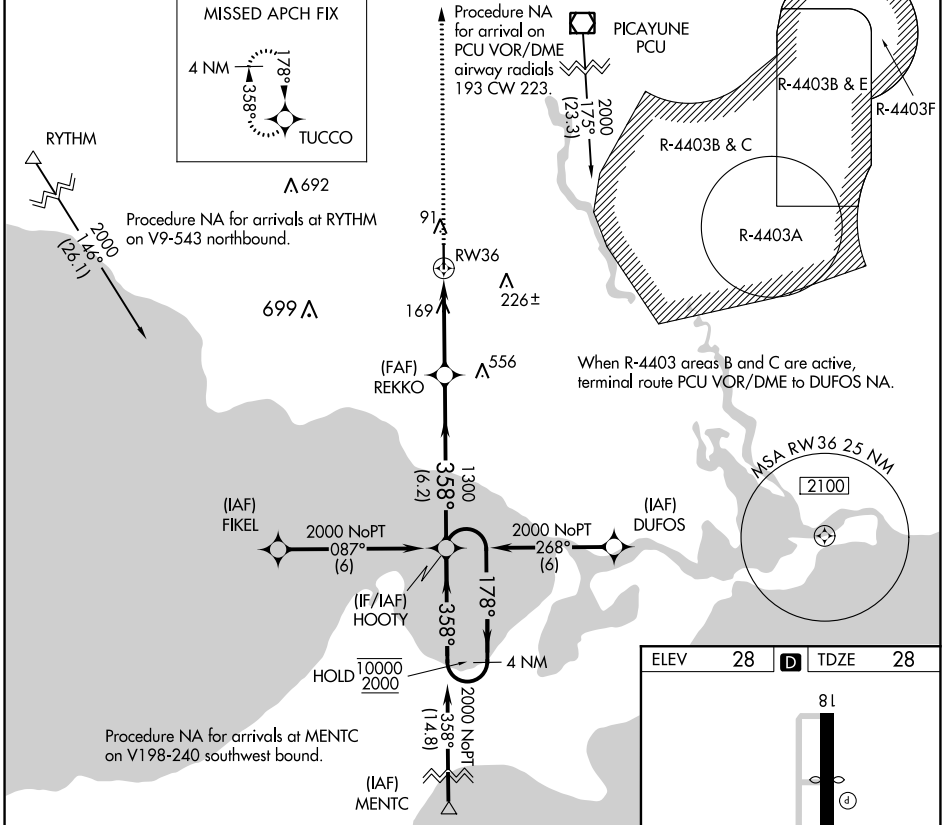
APP CRS	Rwy Ldg	<b>5001</b>
<b>358°</b>	TDZE	<b>28</b>
	Apt Elev	<b>28</b>

# RNAV (GPS) RWY 36

SLIDELL (ASD)

RNP APCH.	MISSED APPROACH: Climb to 2000 direct TUCCO and hold.
Rwy 36 helicopter visibility reduction below 3/4 SM NA.	

ASOS <b>132.475</b>	NEW ORLEANS APP CON <b>133.15 290.3</b>	UNICOM <b>122.8 (CTAF)</b>	GCO <b>135.075</b>
------------------------	--	-------------------------------	-----------------------



CATEGORY	A	B	C	D
LNVA MDA	460-1 432 (500-1)		460-1¼ 432 (500-1¼)	NA
CIRCLING	480-1 452 (500-1)		520-1½ 492 (500-1½)	NA

SC-4, 28 NOV 2024 to 26 DEC 2024

SC-4, 28 NOV 2024 to 26 DEC 2024