

| | | |
|--|------------------------|---|
| WAAS CH 72811 W18A | APP CRS 180° | Rwy Idg 5005 TDZE 338 Apt Elev 363 |
|--|------------------------|---|

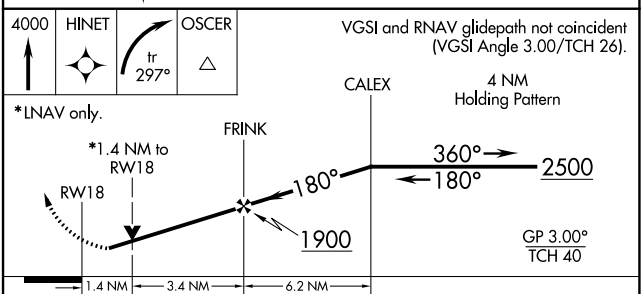
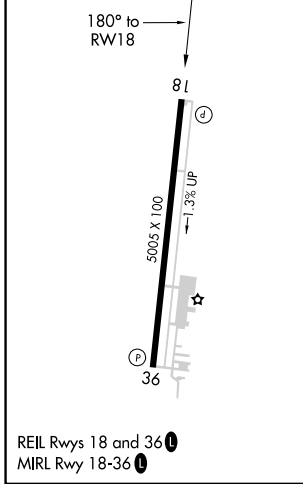
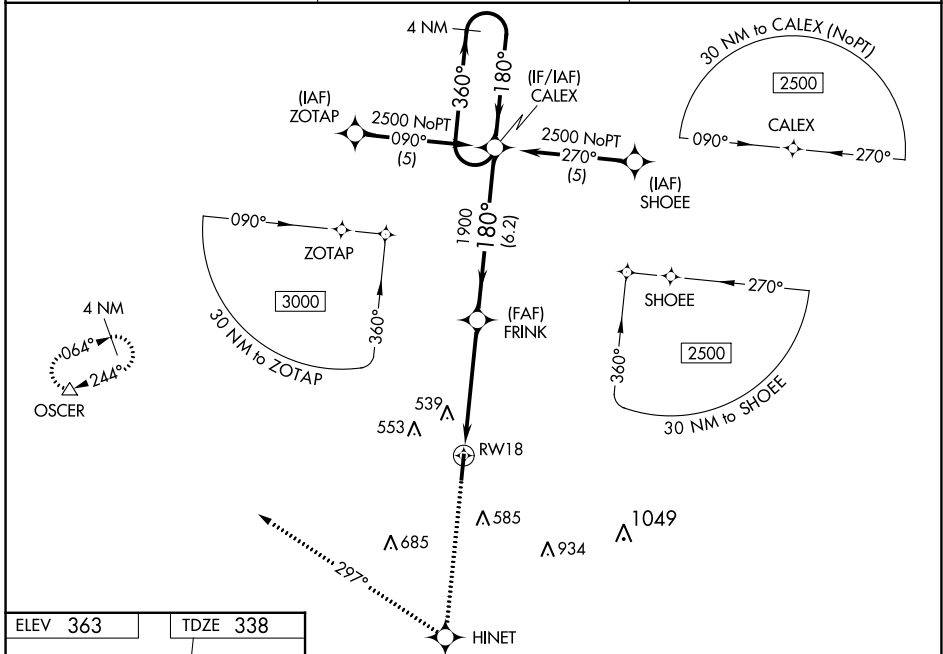
RNAV (GPS) RWY 18

HUNTSVILLE MUNI (UTS)

▼ Baro-VNAV NA when using Conroe/North Houston Rgnl altimeter setting. For uncompensated Baro-VNAV systems, LNAV/VNAV NA below -15°C (5°F) or above 54°C (130°F). DME/DME RNP-0.3 NA. Visibility reduction by helicopters NA. VDP NA when using Conroe/North Houston Rgnl altimeter setting. When local altimeter setting not received, use Conroe/North Houston Rgnl altimeter setting and increase all DA 75 feet and all MDA 80 feet; increase LPV and LNAV/VNAV all Cats and Circling Cat C visibility ¼ mile.

MISSED APPROACH: Climb to 4000 direct HINET and right turn via track 297° to OSCER and hold.

| | | |
|------------------------|--------------------------------------|---------------------------------|
| ASOS 119.425 | HOUSTON CENTER 134.8 269.6 | UNICOM 122.8 (CTAF) 0 |
|------------------------|--------------------------------------|---------------------------------|



| CATEGORY | A | B | C | D |
|--------------|-------|-------------|-------------------------|----|
| LPV DA | | 588-1 | 250 (300-1) | NA |
| LNAV/VNAV DA | | 886-2 | 548 (600-2) | NA |
| LNAV MDA | 840-1 | 502 (500-1) | 840-1½ 502 (500-1½) | NA |
| CIRCLING | 920-1 | 557 (600-1) | 1120-2¼ 757 (800-2¼) | NA |

SC-5, 28 NOV 2024 to 26 DEC 2024

SC-5, 28 NOV 2024 to 26 DEC 2024