

(INDIE8.INDIE) 21336

AL-5824 (FAA)

BAY CITY RGNL (BYY)

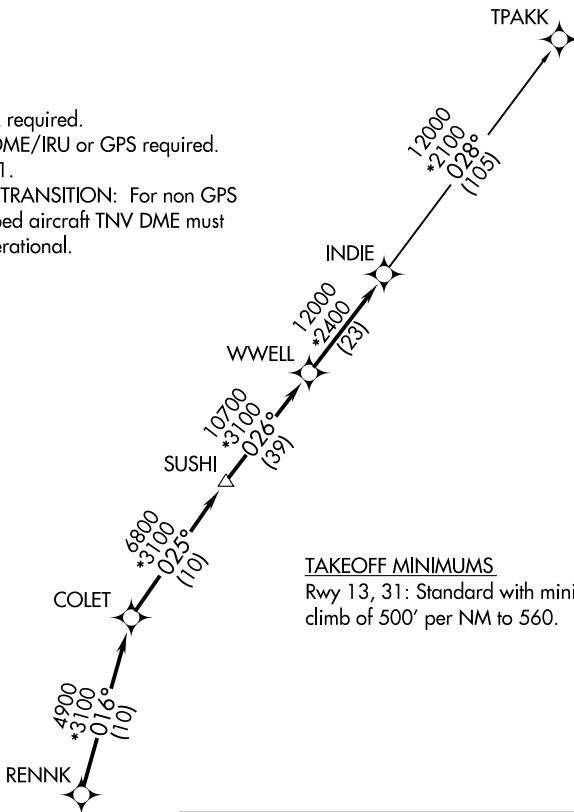
# INDIE EIGHT DEPARTURE (RNAV)

BAY CITY, TEXAS

AWOS-3  
118.075  
CTAF  
122.8  
HOUSTON CENTER  
128.6 360.8

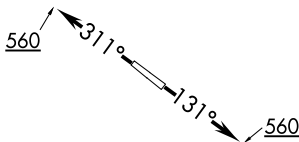
**TOP ALTITUDE:  
ASSIGNED BY ATC**

- NOTE: RADAR required.
- NOTE: DME/DME/IRU or GPS required.
- NOTE: RNAV 1.
- NOTE: TPAKK TRANSITION: For non GPS equipped aircraft TNV DME must be operational.



### TAKEOFF MINIMUMS

Rwy 13, 31: Standard with minimum climb of 500' per NM to 560.



### DEPARTURE ROUTE DESCRIPTION

TAKEOFF RUNWAY 13: Climb on heading 131° to 560 for RADAR vectors to RENNK, thence . . . .

TAKEOFF RUNWAY 31: Climb on heading 311° to 560 for RADAR vectors to RENNK, thence . . . .

. . . . on track 016° to COLET, then on track 025° to SUSHI, then on track 026° to WWELL, then on track 026° to INDIE, then on (transition). Maintain ATC assigned altitude. Expect filed altitude 10 minutes after departure.

TPAKK TRANSITION (INDIE8.TPAKK)

NOTE: Chart not to scale.

SC-5, 28 NOV 2024 to 26 DEC 2024

SC-5, 28 NOV 2024 to 26 DEC 2024

# INDIE EIGHT DEPARTURE (RNAV)

(INDIE8.INDIE) 07OCT21

BAY CITY, TEXAS

BAY CITY RGNL (BYY)