

VORTAC PSX <b>117.3</b> Chan <b>120</b>	APP CRS <b>054°</b>	Rwy Idg TDZE Apt Elev	<b>N/A</b> <b>N/A</b> <b>45</b>
---	------------------------	-----------------------------	---------------------------------------

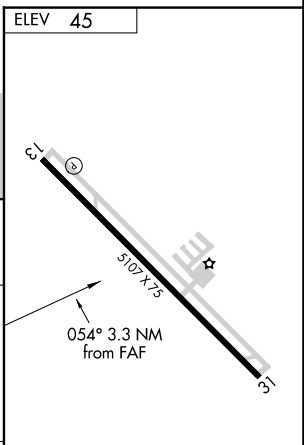
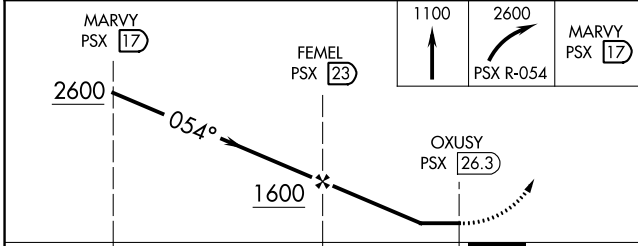
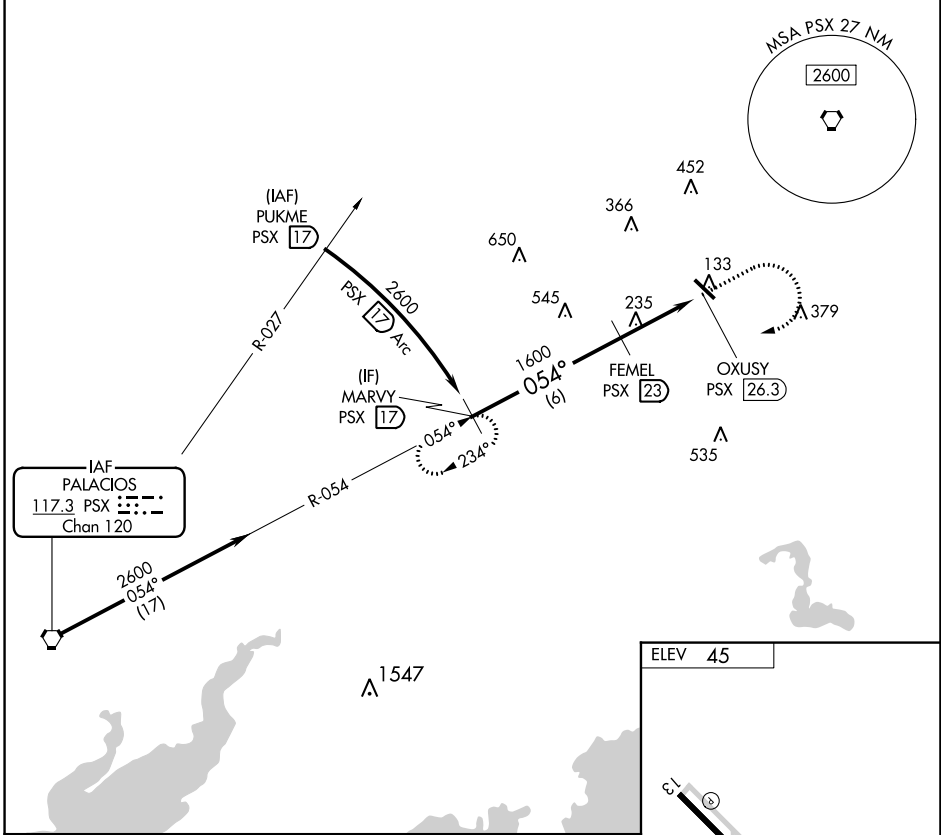
# VOR-A

BAY CITY RGNL (BY Y)

**▼** Rwy 13, 31 helicopter visibility reduction below 1 SM NA.  
**▲** DME required. When local altimeter setting not received, use Palacios altimeter setting and increase all MDA 80 feet.

MISSED APPROACH: Climb to 1100 then climbing right turn to 2600 on PSX VORTAC R-054 to MARYV/17 DME and hold.

AWOS-3 <b>118.075</b>	HOUSTON CENTER <b>128.6 360.8</b>	UNICOM <b>122.8</b> (CTAF) <b>📞</b>
--------------------------	--------------------------------------	--



CATEGORY	A	B	C	D
<b>📍</b> CIRCLING	1080-1¼ 1035 (1100-1¼)	1080-1½ 1035 (1100-1½)	1080-3 1035 (1100-3)	NA

REIL Rwy 13 **📞**  
 REIL Rwy 31 **📞**  
 MIRL Rwy 13-31 **📞**

SC-5, 28 NOV 2024 to 26 DEC 2024

SC-5, 28 NOV 2024 to 26 DEC 2024