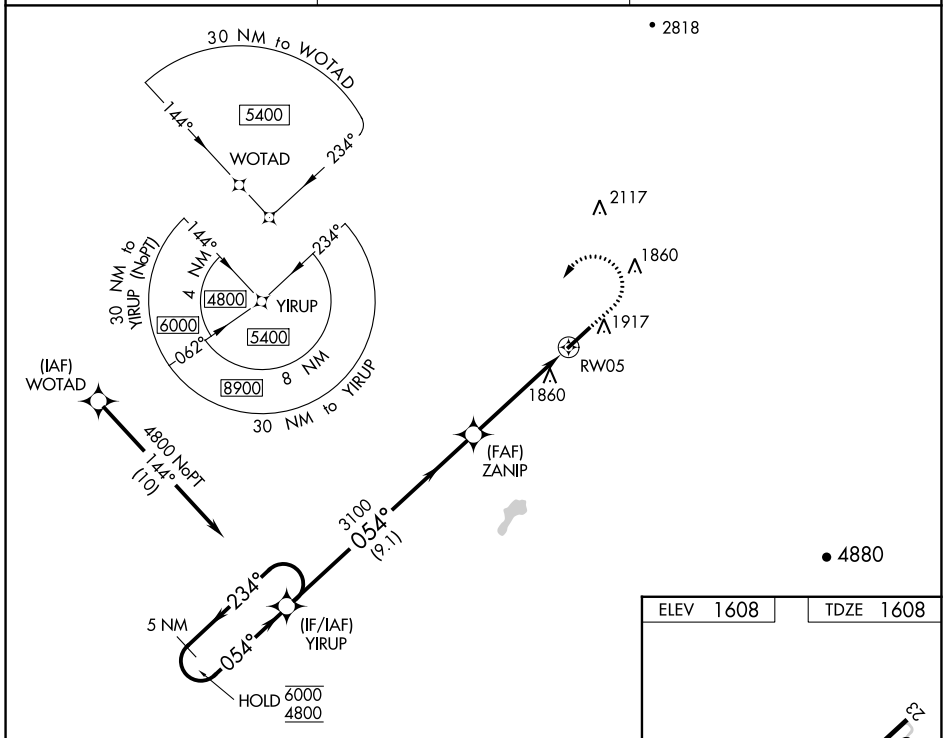


WAAS CH 58330 W05A	APP CRS 054°	Rwy Idg TDZE Apt Elev	6300 1608 1608
---------------------------------	------------------------	-----------------------------	---

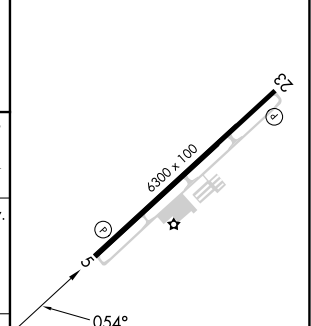
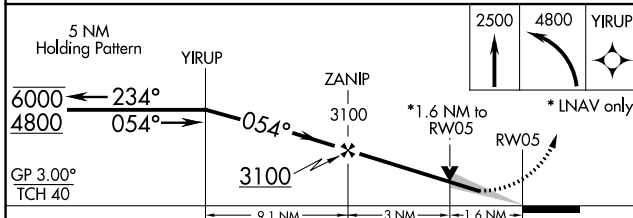
RNAV (GPS) RWY 5

GREENEVILLE MUNI (GCY)

RNP APCH.		MISSED APPROACH: Climb to 2500 then climbing left turn to 4800 direct YIRUP and hold.
<p>▽ ▲</p> <p>Circling Rwy 23 NA at night. For uncompensated Baro-VNAV systems, LNAV/VNAV NA below -18°C or above 54°C.</p>		
AWOS-3 128.425	TRI-CITY APP CON★ 128.05 317.5	UNICOM 122.7 (CTAF)



ELEV 1608	TDZE 1608
-----------	-----------



5 NM Holding Pattern	YIRUP	ZANIP	2500	4800	YIRUP
6000 ← 234°	4800 → 054°	3100	↑	↶	✧
GP 3.00°	3100	*1.6 NM to RW05	* LNAV only.		
TCH 40	9.1 NM	3 NM	1.6 NM		
CATEGORY	A	B	C	D	
LPV DA		1860-3/4	252 (300-3/4)		
LNAV/VNAV DA		2179-15/8	571 (600-15/8)		
LNAV MDA	2140-1	532 (600-1)	2140-1 1/2	532 (600-1 1/2)	
C CIRCLING	2240-1	632 (700-1)	2260-1 3/4	2280-2 1/4	
			652 (700-1 3/4)	672 (700-2 1/4)	

MIRL Rwy 5-23
REIL Rwy 5 and 23

SE-1, 28 NOV 2024 to 26 DEC 2024

SE-1, 28 NOV 2024 to 26 DEC 2024