

| | | | |
|--|------------------------|-----------------------------|---|
| WAAS CH 90434 W05A | APP CRS 051° | Rwy Idg TDZE Apt Elev | 5505 1545 1545 |
|--|------------------------|-----------------------------|---|

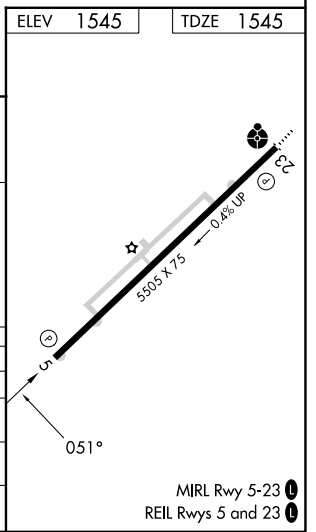
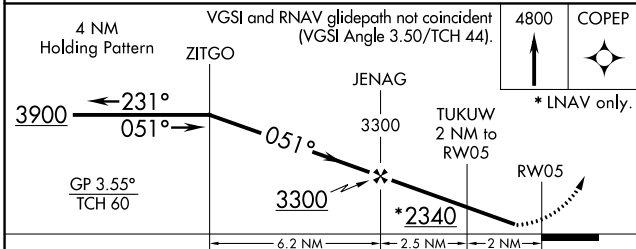
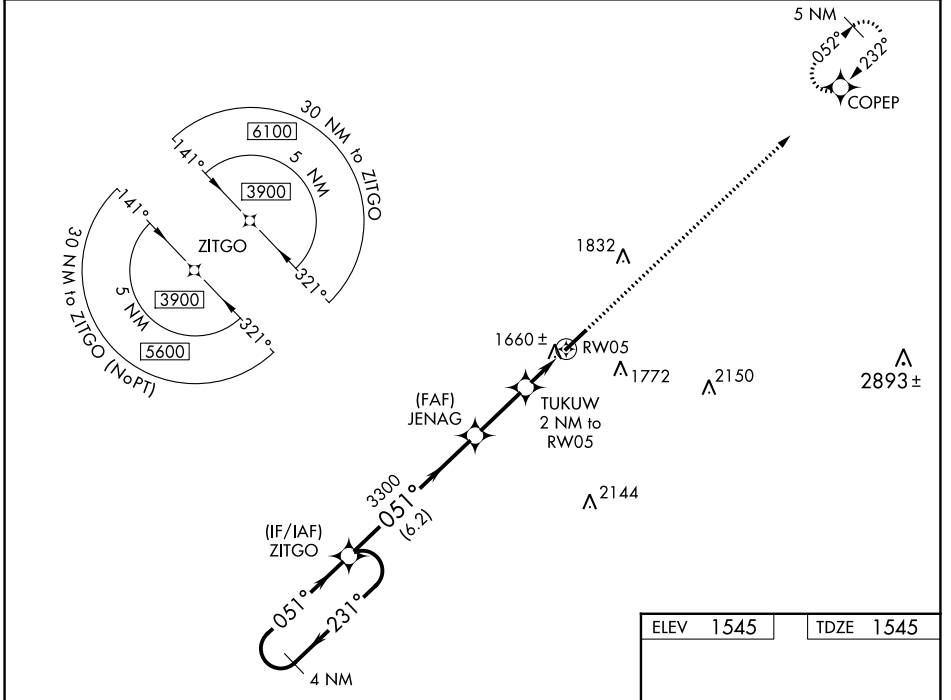
RNAV (GPS) RWY 5

SCOTT MUNI (SCX)

Baro-VNAV NA when using Monticello altimeter setting. For uncompensated Baro-VNAV systems, LNAV/VNAV NA below -18°C (0°F) or above 47°C (118°F). DME/DME RNP-0.3 NA. When local altimeter setting not received, use Monticello altimeter setting: increase LPV DA to 2180 feet, LNAV/VNAV DA to 2092 feet and all visibilities ¾ mile; increase all MDA 240 feet and LNAV Cat C visibility ¾ mile and Circling Cat C 1 mile. Night landing: Rwy 5 NA. Helicopter visibility reduction below 1 SM NA.

MISSED APPROACH:
Climb to 4800 direct COPEP and hold.

| | | |
|--------------------------|---|---------------------------------|
| AWOS-3 135.025 | INDIANAPOLIS CENTER 124.625 371.925 | UNICOM 122.8 (CTAF) 0 |
|--------------------------|---|---------------------------------|



| CATEGORY | A | B | C | D |
|--------------|----------------------------|-------------|----------------------------|----|
| LPV DA | 1948-1 1/8 403 (500-1 1/8) | | | NA |
| LNAV/VNAV DA | 1860-1 315 (400-1) | | | NA |
| LNAV MDA | 1960-1 | 415 (500-1) | 1960-1 1/8 415 (500-1 1/8) | NA |
| CIRCLING | 2040-1 | 495 (500-1) | 2200-1 3/4 655 (700-1 3/4) | NA |

SE-1, 28 NOV 2024 to 26 DEC 2024

SE-1, 28 NOV 2024 to 26 DEC 2024