

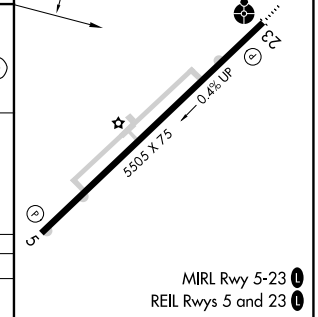
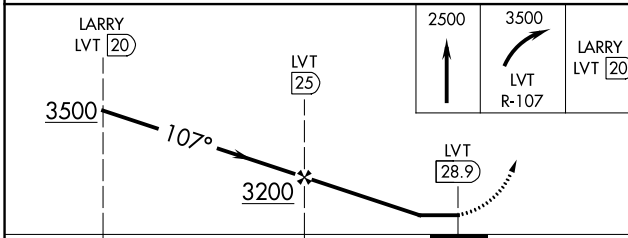
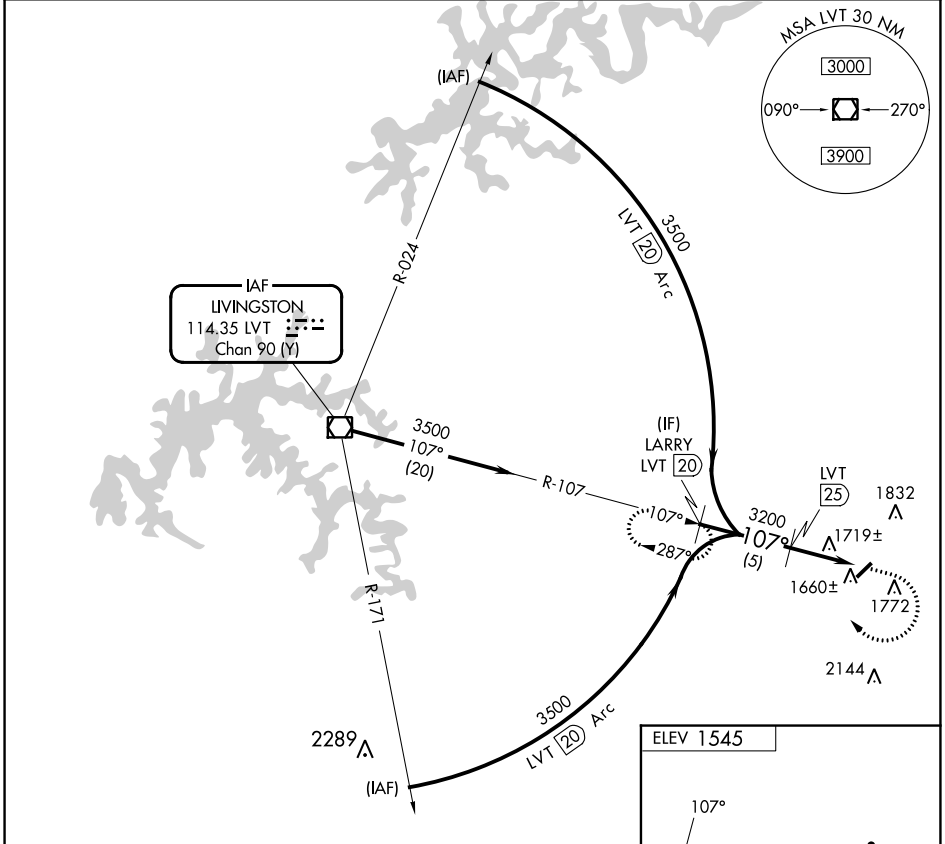
VOR/DME LVT <b>114.35</b> Chan <b>90</b> (Y)	APP CRS <b>107°</b>	Rwy Idg TDZE Apt Elev <b>N/A</b> <b>1545</b>
--	------------------------	---

**VOR/DME-A**  
SCOTT MUNI (SCX)

**⚠** Circling to Rwy 5 NA at night. Helicopter visibility reduction below 1 SM NA. When local altimeter setting not received, use Monticello altimeter setting and increase all MDA 240 feet and Circling Cat C 1 SM, Cat D ¾ SM.

**MISSED APPROACH:** Climb to 2500 then climbing right turn to 3500 on LVT VOR/DME R-107 to LARRY/20 DME and hold.

AWOS-3 <b>135.025</b>	INDIANAPOLIS CENTER <b>124.625 371.925</b>	UNICOM <b>122.8</b> (CTAF) <b>📻</b>
--------------------------	---	--



CATEGORY	A	B	C	D
<b>📻</b> CIRCLING	2040-1 495 (500-1)	2040-1¼ 495 (500-1¼)	2200-1¾ 655 (700-1¾)	2260-2¼ 715 (800-2¼)

SE-1, 28 NOV 2024 to 26 DEC 2024

SE-1, 28 NOV 2024 to 26 DEC 2024