

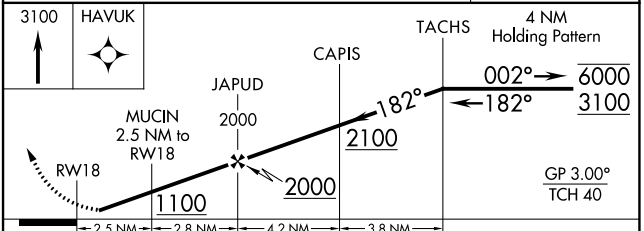
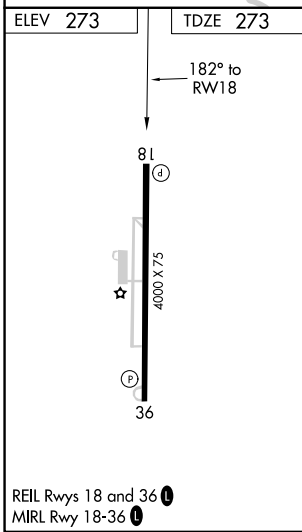
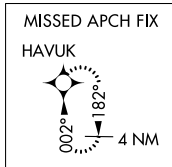
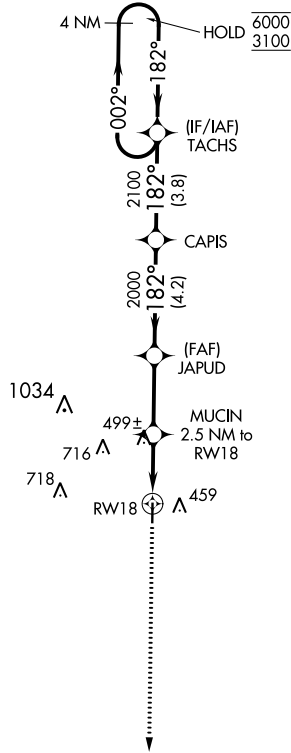
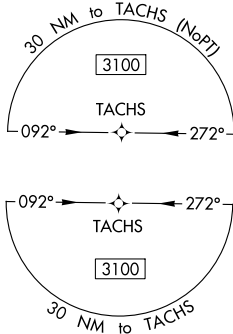
WAAS CH <b>45543</b> <b>W18A</b>	APP CRS <b>182°</b>	Rwy Idg TDZE <b>273</b> Apt Elev <b>273</b>
--	------------------------	---

# RNAV (GPS) RWY 18

POCAHONTAS MUNI (M7 $\emptyset$ )

RNP APCH.	<p><b>▼</b> Rwy 18 helicopter visibility reduction below <math>\frac{3}{4}</math> SM NA. <b>▲</b> Baro-VNAV NA. Use Walnut Ridge altimeter setting.</p>	MISSED APPROACH: Climb to 3100 direct HAVUK and hold.
-----------	---	---

ARG AWOS-3PT <b>126.525</b>	MEMPHIS CENTER <b>120.075 289.4</b>	UNICOM <b>122.8 (CTAF) <math>\emptyset</math></b>
--------------------------------	--	--



CATEGORY	A	B	C	D
LPV DA	571-1 298 (300-1)			
RNAV/VNAV DA	733-1 $\frac{3}{8}$ 460 (500-1 $\frac{3}{8}$ )			
RNAV MDA	780-1 507 (600-1)		780-1 $\frac{3}{8}$ 507 (600-1 $\frac{3}{8}$ )	
<b>C</b> CIRCLING	900-1 627 (700-1)		1100-2 $\frac{1}{2}$ 827 (900-2 $\frac{1}{2}$ )	1100-2 $\frac{3}{4}$ 827 (900-2 $\frac{3}{4}$ )

SC-1, 28 NOV 2024 to 26 DEC 2024

SC-1, 28 NOV 2024 to 26 DEC 2024