


LOC I-HSA <b>110.35</b>	APP CRS <b>182°</b>	Rwy Idg <b>8498</b> TDZE <b>23</b> Apt Elev <b>23</b>
----------------------------	------------------------	---

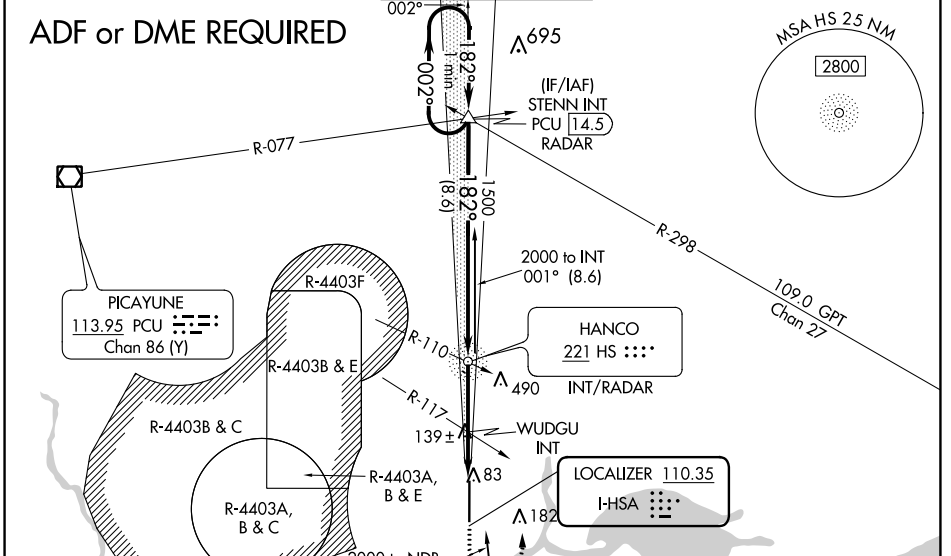
# ILS Z or LOC Z RWY 18

STENNIS INTL (HSA)

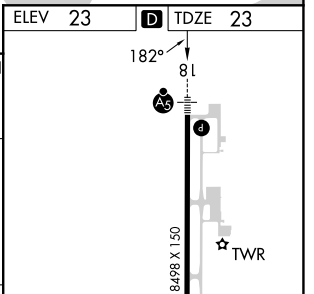
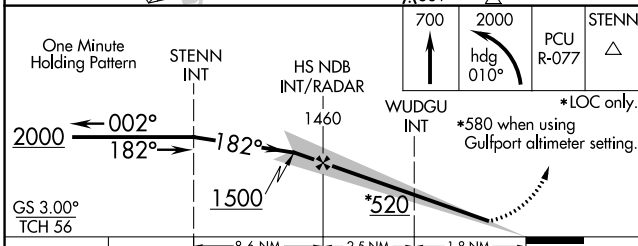
**⚠** Circling NA for Cat E W of Rwy 18-36. ADF or DME required. When local altimeter setting not received, use Gulfport altimeter setting: increase DA to 270 feet; increase all MDA 60 feet and S-LOC 18 Cats C/D/E visibility 1/8 mile, Circling Cat C visibility 1/8 mile and Cats D/E visibility 1/4 mile. WUDGU FIX minimums: increase S-LOC 18 Cats C/D/E visibility 1/8 mile, and Circling Cats D/E 1/4 mile. For inop MALSRL, increase S-ILS 18 Cat E visibility to 3/4 mile, and S-LOC 18 Cats C/D/E visibility to 1 1/8 mile. WUDGU FIX minimums: increase S-LOC 18 Cats C/D/E visibility to 1 mile. For inop MALSRL when using Gulfport altimeter setting, increase S-ILS 18 Cat E visibility to 3/4 mile and S-LOC Cat E visibility to 1 1/8 mile. WUDGU FIX minimums: increase S-LOC 18 Cat E visibility to 1 1/4 mile.

**MALSRL**  
  
**MISSED APPROACH:**  
 Climb to 700 then climbing left turn to 2000 on heading 010° and on PCU VOR/DME R-077 to STENN INT and hold.

AWOS-3PT <b>118.375</b>	GULFPORT APP CON* <b>124.6 354.1</b> (130°-309°) <b>127.5 254.25</b> (310°-129°)	STENNIS TOWER* <b>127.15</b> (CTAF) <b>0 229.4</b>	GND CON <b>121.725 229.4</b>	UNICOM <b>122.95</b>
----------------------------	--	---	---------------------------------	-------------------------



ELEV 23	<b>D</b> TDZE 23
---------	------------------



CATEGORY	A	B	C	D	E
S-ILS 18	223-1/2 200 (200-1/2)				
S-LOC 18	520-1/2	497 (500-1/2)	520-1 497 (500-1)		
<b>C</b> CIRCLING	520-1	497 (500-1)	520-1 1/2 497 (500-1 1/2)	820-2 1/2 797 (800-2 1/2)	820-2 3/4 797 (800-2 3/4)
WUDGU FIX MINIMUMS (DUAL VOR RECEIVERS REQUIRED)					
S-LOC 18	400-1/2	377 (400-1/2)	400-5/8 377 (400-5/8)		
<b>C</b> CIRCLING	480-1	457 (500-1)	520-1 1/2 497 (500-1 1/2)	820-2 1/2 797 (800-2 1/2)	820-2 3/4 797 (800-2 3/4)

REIL Rwy 36	36
HIRL Rwy 18-36	36
FAF to MAP 4.3 NM	
Knots	60 90 120 150 180
Min:Sec	4:18 2:52 2:09 1:43 1:26

SC-4, 28 NOV 2024 to 26 DEC 2024

SC-4, 28 NOV 2024 to 26 DEC 2024