

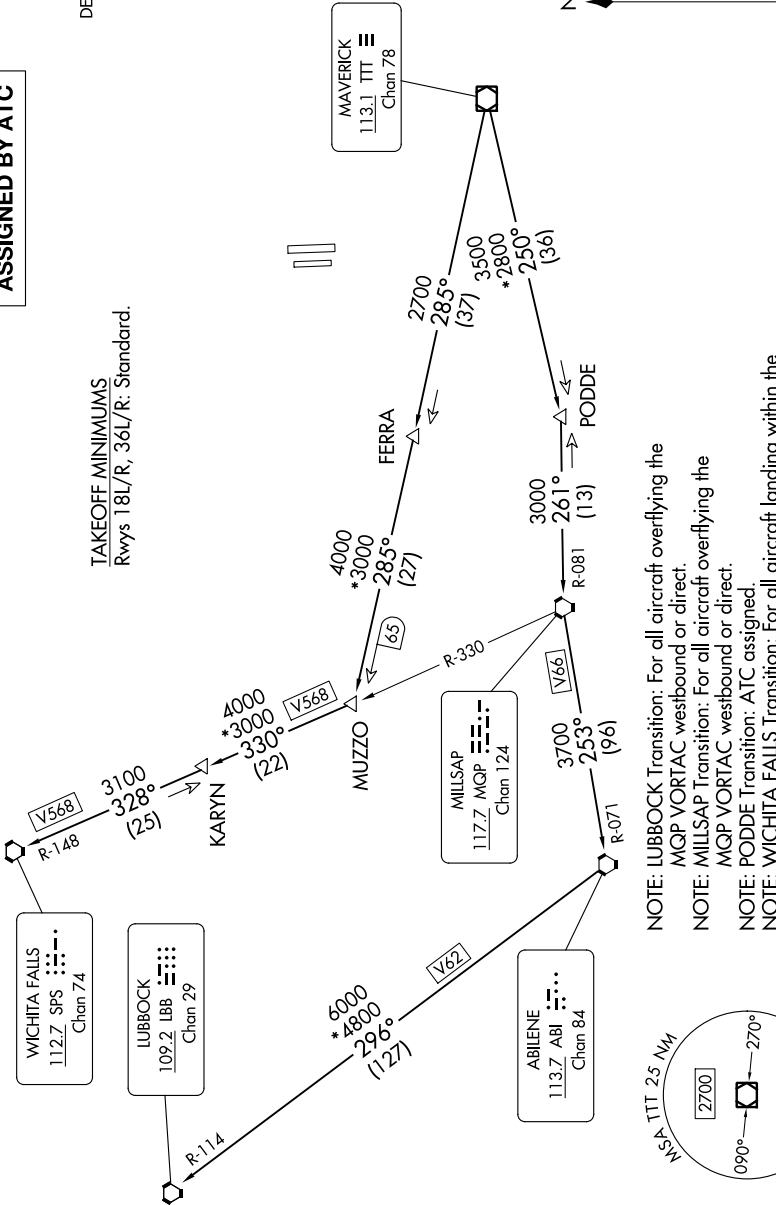
# KINGDOM FOUR DEPARTURE

LONE STAR DEP CON  
118.1 306.95  
CLINC DEL  
123.95  
GND CON  
123.95  
DENTON TOWER\*  
119.95 (CTAF)

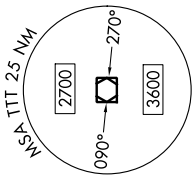
**TOP ALTITUDE:  
ASSIGNED BY ATC**

**TAKEOFF MINIMUMS**  
Rwys 18L/R, 36L/R: Standard.

RADAR and DME required.



- NOTE: LUBBOCK Transition: For all aircraft overlying the MQP VORTAC westbound or direct.
- NOTE: MILLSAP Transition: For all aircraft overlying the MQP VORTAC westbound or direct.
- NOTE: PODDE Transition: ATC assigned.
- NOTE: WICHITA FALLS Transition: For all aircraft landing within the Wichita Falls terminal area or overlying the SPS VORTAC.
- NOTE: For all aircraft requesting 17000 and below.



NOTE: Chart not to scale.

(CONTINUED ON FOLLOWING PAGE)

# KINGDOM FOUR DEPARTURE