

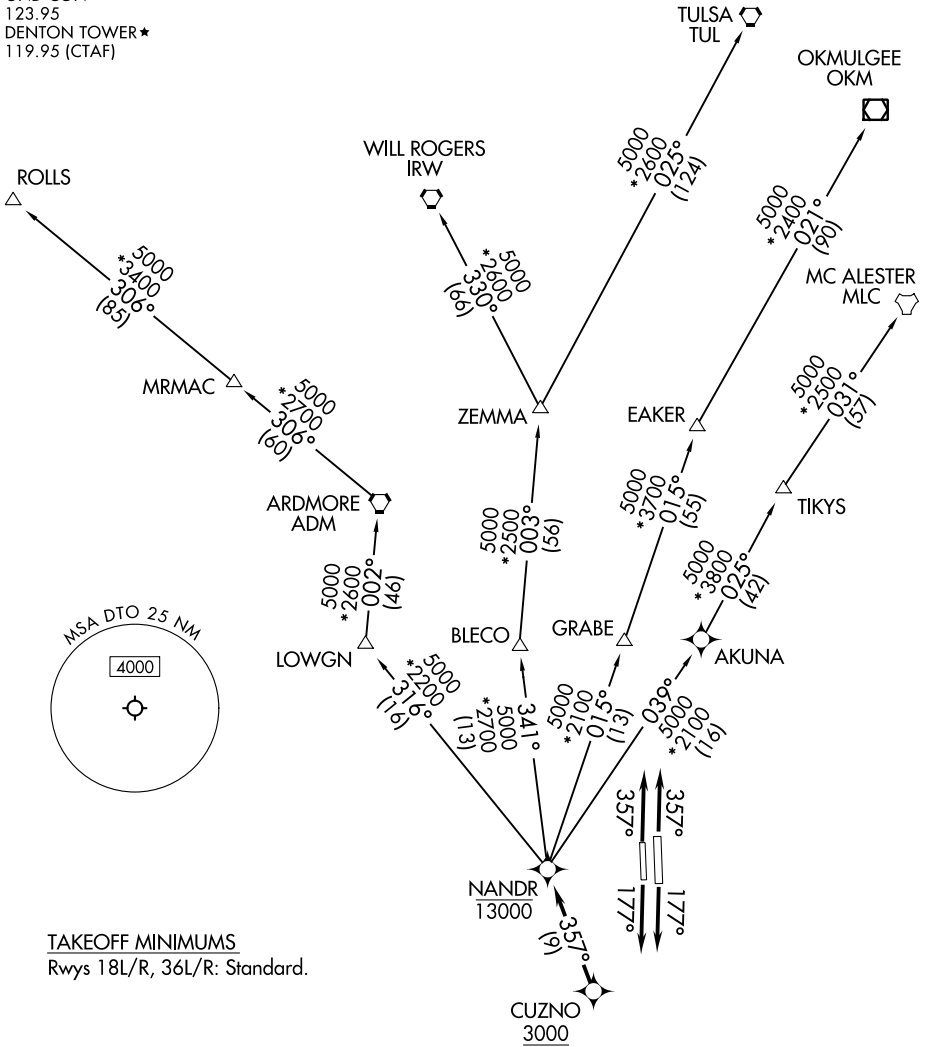
# NANDR TWO DEPARTURE (RNAV)

DENTON, TEXAS

LONE STAR DEP CON  
 118.1 306.95  
 CLNC DEL  
 123.95  
 GND CON  
 123.95  
 DENTON TOWER★  
 119.95 (CTAF)

RNAV 1 - DME/DME/IRU or GPS.  
 RADAR required.

**TOP ALTITUDE:  
 ASSIGNED BY ATC**



TAKEOFF MINIMUMS  
 Rwys 18L/R, 36L/R: Standard.

NOTE: EAKER Transition: For TUL terminal arrivals only.  
 NOTE: TULSA Transition: For all aircraft overflying TUL VORTAC.  
 NOTE: Aircraft arriving to the Oklahoma City terminal area, file and expect the ZEMMA enroute transition.

(CONTINUED ON FOLLOWING PAGE)

NOTE: Chart not to scale.

SC-2, 28 NOV 2024 to 26 DEC 2024

SC-2, 28 NOV 2024 to 26 DEC 2024

# NANDR TWO DEPARTURE (RNAV)