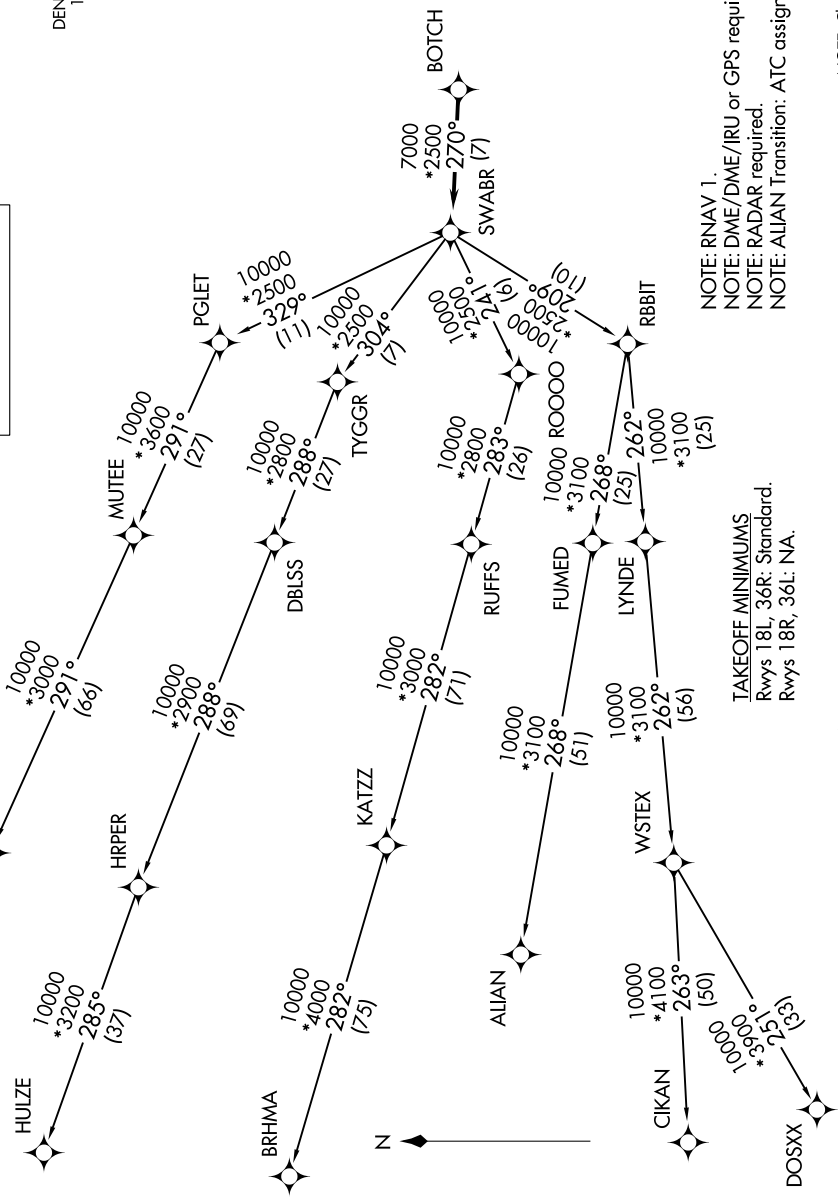


SWABR ONE DEPARTURE (RNAV)

LONE STAR DEP CON
118.1 306.95
CLINC DEL
123.95
GND CON
123.95
DENTON TOWER *
119.95 (CTAF)



**TOP ALTITUDE:
ASSIGNED BY ATC**



NOTE: RNAV 1.
NOTE: DME/DME/IRU or GPS required.
NOTE: RADAR required.
NOTE: ALIAN Transition: ATC assigned only.

TAKEOFF MINIMUMS
Rwys 18L, 36R: Standard.
Rwys 18R, 36L: NA.

NOTE: Chart not to scale.

(CONTINUED ON FOLLOWING PAGE)