

NORFOLK, VIRGINIA

AL-5870 (FAA)

23278

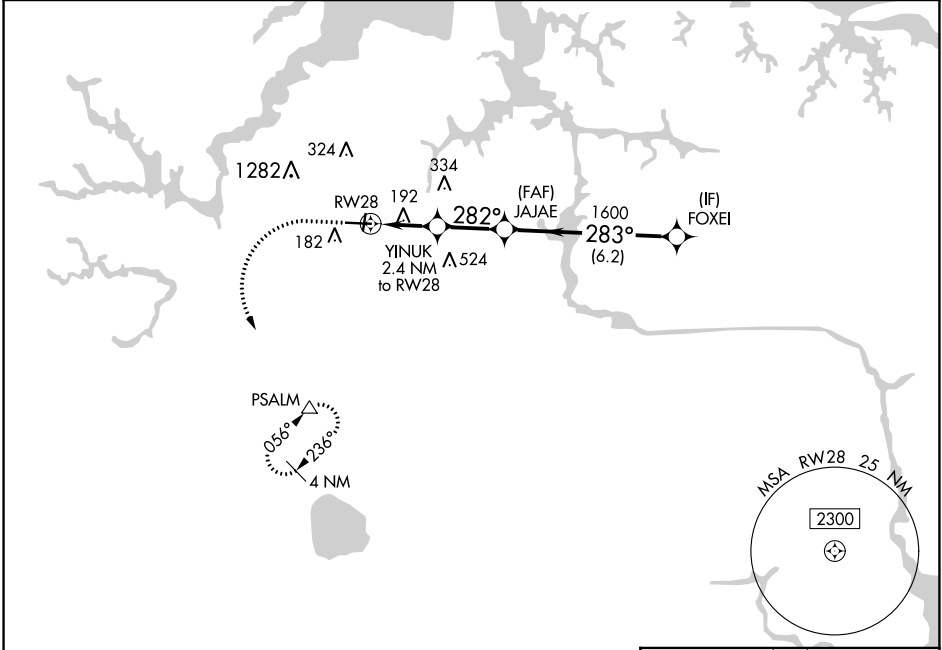
APP CRS	Rwy Idg	5350
282°	TDZE	25
	Apt Elev	28

RNAV (GPS) RWY 28

HAMPTON ROADS EXEC (PVG)

RNP APCH.	MISSED APPROACH: Climb to 1600 then climbing left turn to 2500 direct PSALM and hold.
<p>▼ Circling NA to Rwys 2 and 20. Circling Cat C NA north of Rwy 10-28. Rwy 28 helicopter visibility reduction below 1 SM NA.</p>	

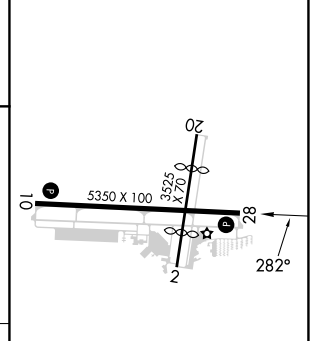
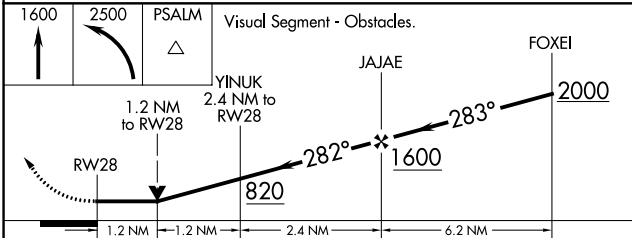
AWOS-3PT 118,375	NORFOLK APP CON 118.9 353.7	UNICOM 122,725 (CTAF) 0
----------------------------	---------------------------------------	-----------------------------------



NE-3, 28 NOV 2024 to 26 DEC 2024

NE-3, 28 NOV 2024 to 26 DEC 2024

ELEV	28	TDZE	25
------	-----------	------	-----------



CATEGORY	A	B	C	D
LNNAV MDA	460-1	435 (500-1)	460-1¼ 435 (500-1¼)	NA
C CIRCLING	500-1	472 (500-1)	780-2 752 (800-2)	NA

HIRL Rwy 10-28 0
 MIRL Rwy 2-20 0
 REIL Rws 10 and 28 0

NORFOLK, VIRGINIA
 Orig 15AUG19

36°47'N-76°27'W

HAMPTON ROADS EXEC (PVG) RNAV (GPS) RWY 28