


LOC I-PXE <b>109.15</b>	APP CRS <b>005°</b>	Rwy ldg <b>5004</b>
		TDZE <b>417</b>
		Apt Elev <b>418</b>

# ILS or LOC RWY 36

PERRY-HOUSTON COUNTY (PXE)

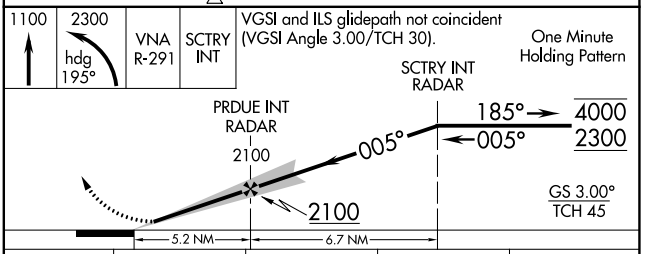
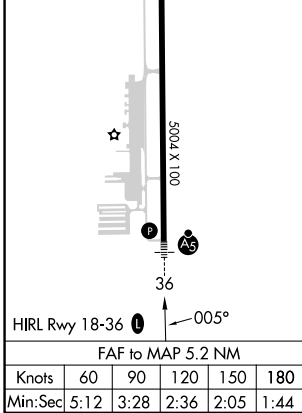
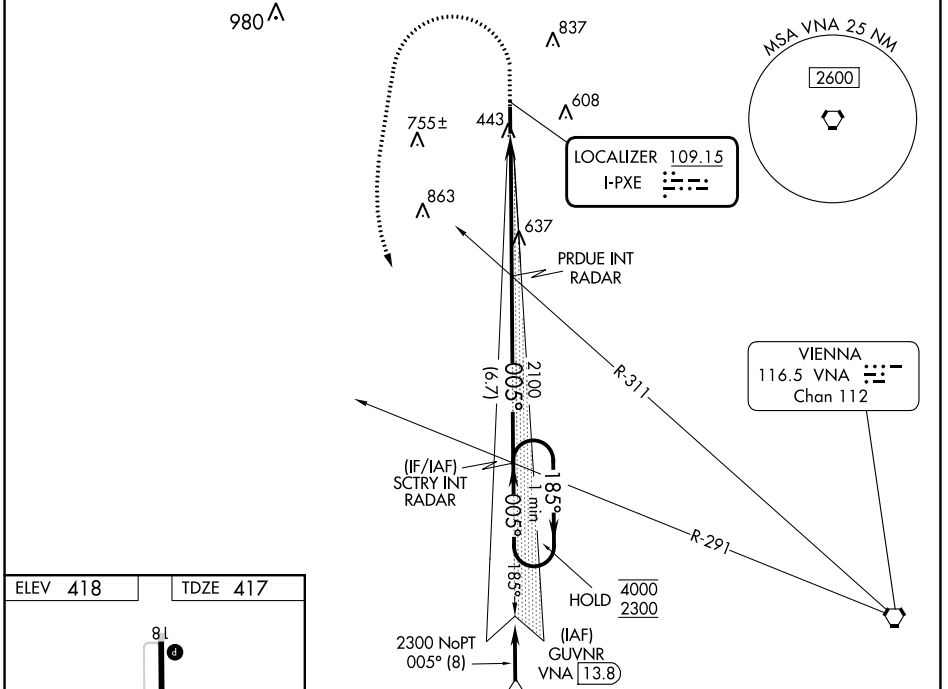
**DME or RADAR required.**

**⚠** Autopilot coupled approach NA below 900. Rwy 36 helicopter visibility reduction below ¾ SM NA. Inop table does not apply to S-ILS-36. When local altimeter setting not received, use Middle Georgia Rgnl altimeter setting: increase all DA to 705 feet; increase all MDAs 40 feet and Circling visibility Cats C and D ¼ SM. For inop ALS, increase S-LOC 36 Cats A/B visibility to 1 SM and Cats C/D to 1¾ SM. For inop ALS when using Middle Georgia Rgnl altimeter setting, increase S-ILS all Cats visibility to ¾ SM and S-LOC 36 Cats A/B visibility to 1 SM.

**MALSR** 

**MISSED APPROACH:** Climb to 1100 then climbing left turn to 2300 on heading 195° and VNA R-291 to SCTRY INT/ RADAR and hold.

AWOS-3 <b>123.825</b>	ATLANTA APP CON★ <b>124.2 279.6</b>	UNICOM <b>122.725(CTAF) 0</b>
--------------------------	--	----------------------------------



CATEGORY	A	B	C	D
S-ILS 36	667-¾ 250 (300-¾)			
S-LOC 36	900-¾	483 (500-¾)	900-1	483 (500-1)
<b>C</b> CIRCLING	900-1	482 (500-1)	1140-2 722 (800-2)	1280-2¾ 862 (900-2¾)

SE-4, 28 NOV 2024 to 26 DEC 2024

SE-4, 28 NOV 2024 to 26 DEC 2024