

LOC/DME I-LBJ <b>110.7</b> Chan 44	APP CRS <b>047°</b>	Rwy Idg <b>5000</b> TDZE <b>1642</b> Apt Elev <b>1642</b>
--	------------------------	---

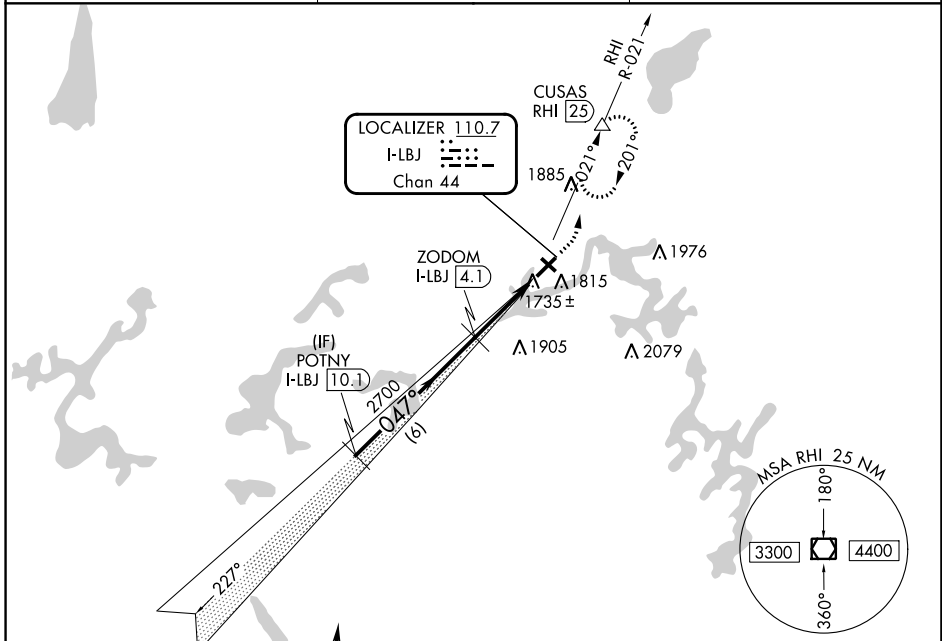
# LOC/DME RWY 4

EAGLE RIVER UNION (EGV)

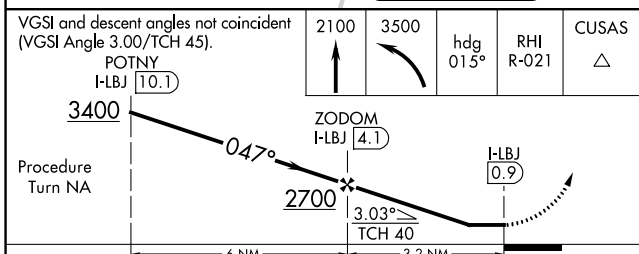
**NA** Visibility reduction by helicopters NA. When local altimeter setting not received, use Minocqua-Woodruff altimeter setting and increase all MDAs 60 feet and Circling Cat C/D visibility ¼ SM.

**MISSED APPROACH:** Climb to 2100 then climbing left turn to 3500 on heading 015° and RHI R-021 to CUSAS/RHI 25 DME and hold.

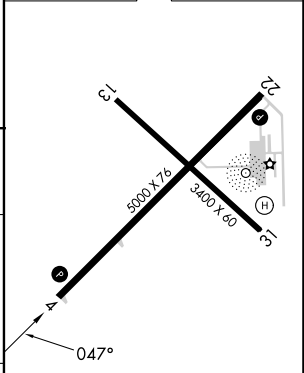
AWOS-3 <b>118.325</b>	MINNEAPOLIS CENTER <b>133.65 281.5</b>	UNICOM <b>122.8</b> (CTAF) <b>1</b>
--------------------------	---	--



Procedure NA for arrivals at RHI VOR/DME via V191 southeast bound, V63 southbound.



ELEV 1642	TDZE 1642
-----------	-----------



CATEGORY	A	B	C	D
S-4	2000-1 358 (400-1)			
CIRCLING	2120-1 478 (500-1)		2260-1¾ 618 (700-1¾)	2340-2¼ 698 (700-2¼)

REIL Rwy 4 and 22 **1**  
MIRL Rwy 4-22 and 13-31 **1**

EC-3, 28 NOV 2024 to 26 DEC 2024

EC-3, 28 NOV 2024 to 26 DEC 2024