

LOC/DME I-ASE <b>111.15</b> Chan <b>48(Y)</b>	APP CRS <b>151°</b>	Rwy Idg TDZE Apt Elev <b>7838</b>	N/A N/A 7838
---	------------------------	---	--------------------

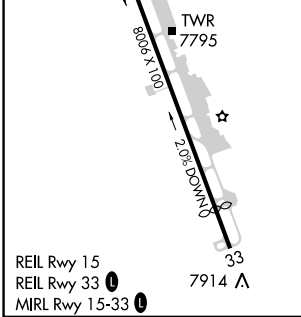
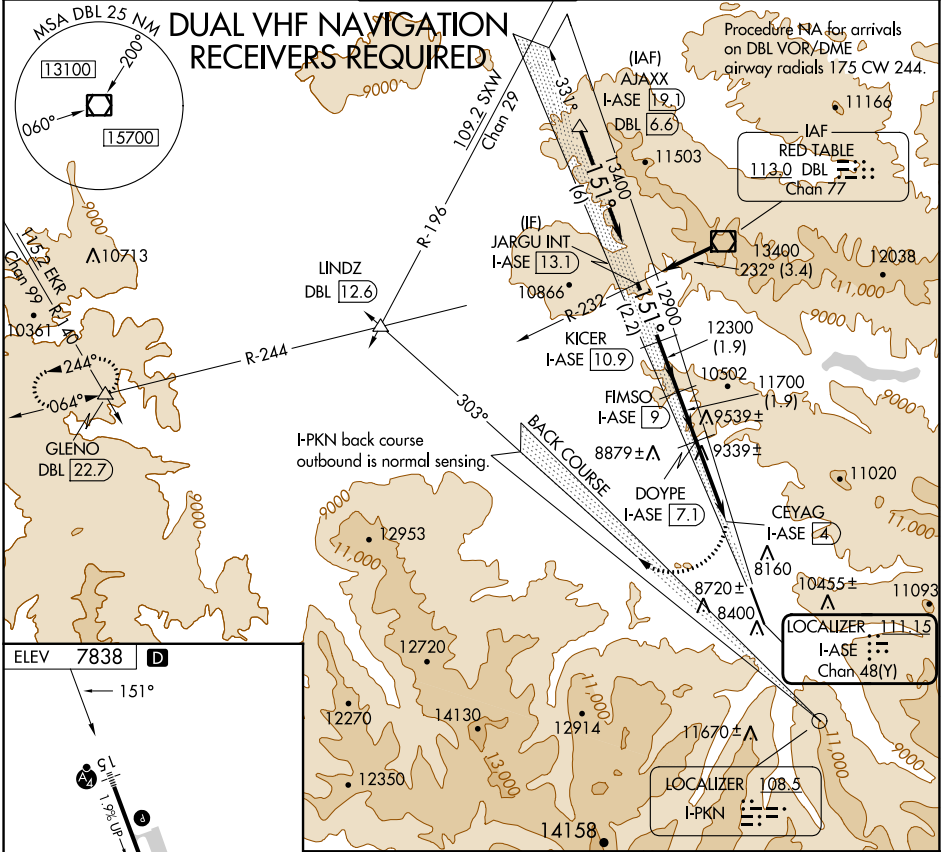
# LOC/DME-E

ASPEN-PITKIN COUNTY/SARDY FLD (ASE)

**NA** Procedure NA at night.  
Circling NA for Cat C southwest of Rwy 15-33.

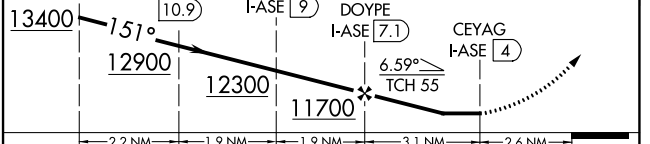
**MISSED APPROACH:** Climbing right turn to 14000 on heading 300° and on I-PKN localizer NW course (303°) to LINDZ INT/DBL 12.6 DME and on DBL VOR/DME R-244 to GLENO INT/DBL 22.7 DME and hold.

ATIS <b>120.4</b>	ASPEN APP CON * <b>123.8 288.3</b>	ASPEN TOWER * <b>118.85 (CTAF) 0 288.3</b>	GND CON <b>121.9</b>	CLNC DEL <b>123.75</b>	UNICOM <b>122.95</b>
----------------------	---------------------------------------	---	-------------------------	---------------------------	-------------------------



VGSI and descent angles not coincident (VGSI Angle 3.50/TCH 55).

JARGU INT I-ASE [13.1]	KICER I-ASE [10.9]	FIMSO I-ASE [9]	DOYPE I-ASE [7.1]	CEYAG I-ASE [4]	LINDZ R-244	DBL	GLENO
------------------------	--------------------	-----------------	-------------------	-----------------	-------------	-----	-------



CATEGORY	A	B	C	D
CIRCLING	9840-3 2002 (2100-3)	10220-3 2382 (2400-3)	10960-3 3122 (3200-3)	NA

SW-1, 28 NOV 2024 to 26 DEC 2024

SW-1, 28 NOV 2024 to 26 DEC 2024