

APP CRS	Rwy Idg	N/A
360°	TDZE	N/A
	Apt Elev	1357

# RNAV (GPS)-B

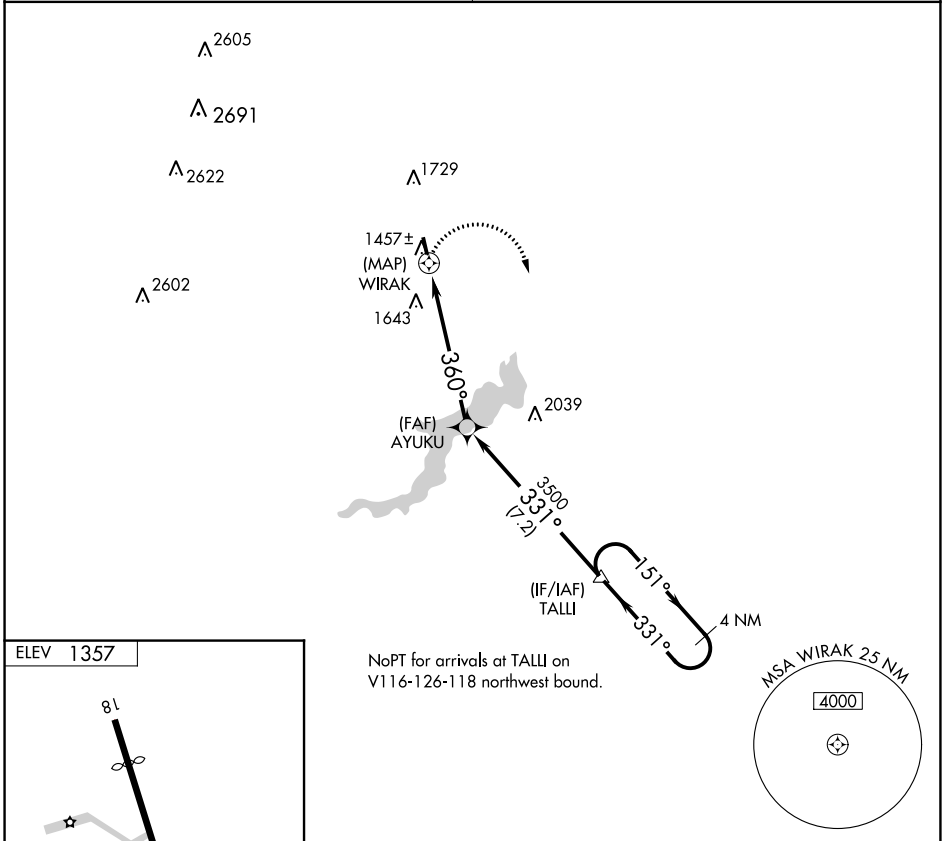
CHERRY RIDGE (N30)

**NA** DME/DME RNP-0.3 NA. Procedure NA at night. Obtain local altimeter setting on CTAF; when not received, use Wilkes-Barre/Scranton Intl altimeter setting, and increase MDA 320 feet and Cat A visibility 1/4 mile.

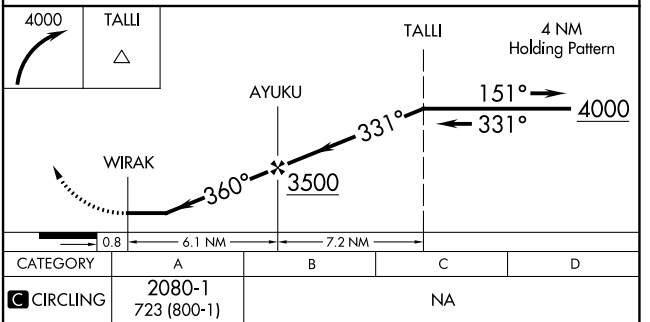
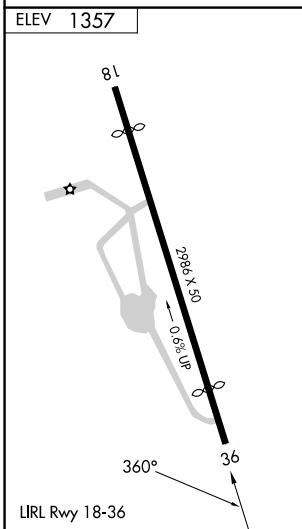
MISSED APPROACH: Climbing right turn to 4000 direct TALLI and hold.

WILKES-BARRE APP CON **120.95 256.7**

UNICOM **122.8 (CTAF)**



NoPT for arrivals at TALLI on V116-126-118 northwest bound.



NE-4, 28 NOV 2024 to 26 DEC 2024

NE-4, 28 NOV 2024 to 26 DEC 2024