

LOC I-HER 110.5	APP CRS 342°	Rwy Idg TDZE Apt Elev	5003 121 121
---------------------------	------------------------	-----------------------------	---

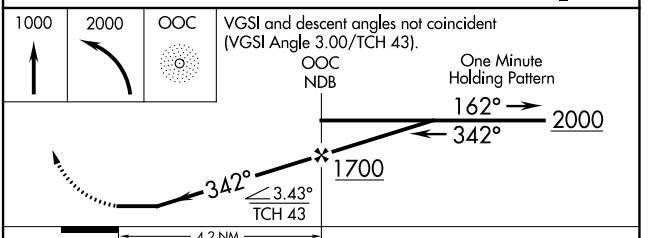
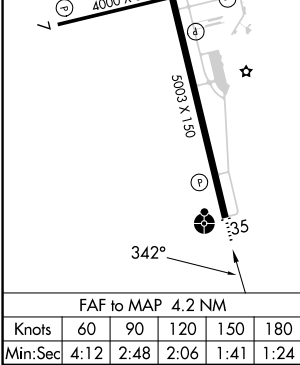
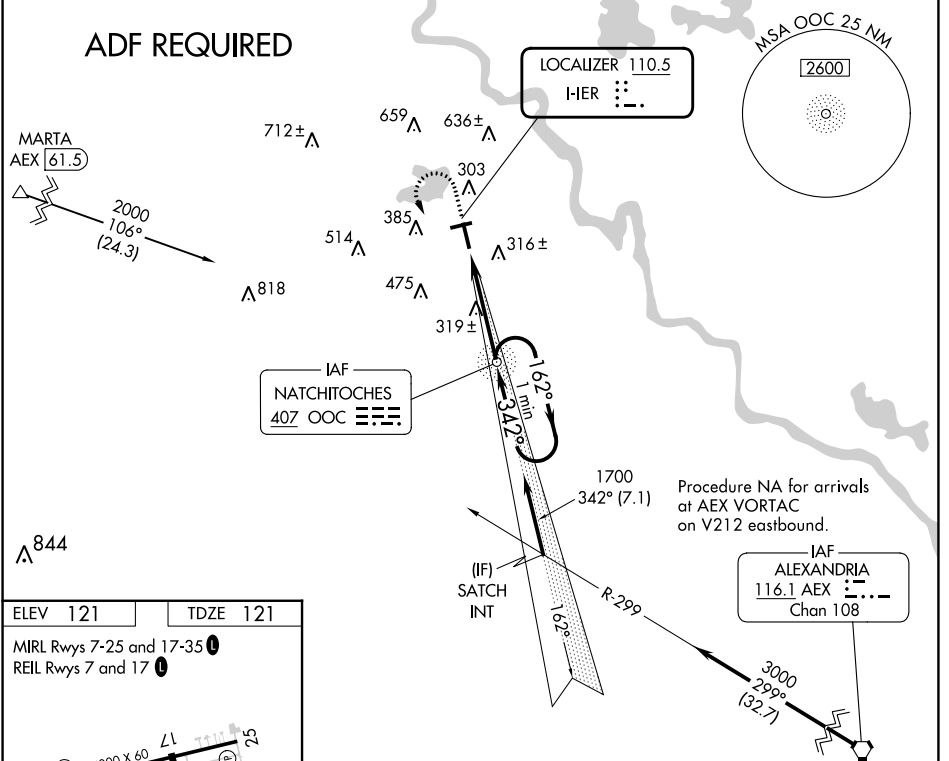
LOC RWY 35
NATCHITOCHE RGNL (I.E.R.)

NA Helicopter visibility reduction below ¼ SM NA. When local altimeter setting not received, use Alexandria Intl altimeter setting: increase all MDA 100 feet and S-35 Cat C visibility ¼ SM and Circling Cat C visibility ½ SM. For inop ODALS when using Alexandria Intl altimeter setting, increase S-35 Cat C visibility ½ mile. Inop table does not apply to S-35 Cat A/B. ADF required.

ODALS

MISSED APPROACH: Climb to 1000 then climbing left turn to 2000 direct OOC NDB and hold.

AWOS-3 119.025	POLK APP CON 125.4 302.2	GCO 135.075	UNICOM 122.8(CTAF) 0
--------------------------	------------------------------------	-----------------------	--------------------------------



CATEGORY	A	B	C	D
S-35	580-1	459 (500-1)	580-1½ 459 (500-1½)	NA
CIRCLING	680-1 559 (600-1)	740-1 619 (700-1)	860-2 739 (800-2)	NA

SC-4, 28 NOV 2024 to 26 DEC 2024

SC-4, 28 NOV 2024 to 26 DEC 2024