

WAAS CH 58327 W04A	APP CRS 040°	Rwy Idg TDZE 840 Apt Elev 843	3170
--	------------------------	---	-------------

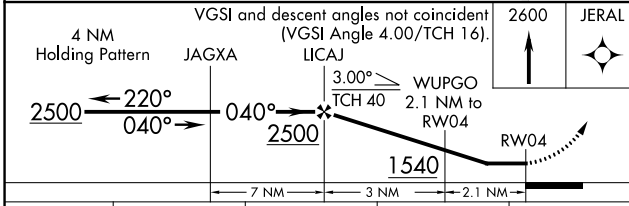
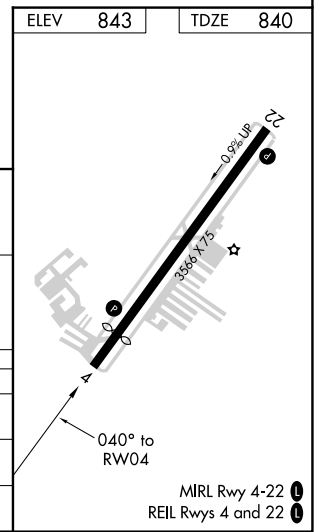
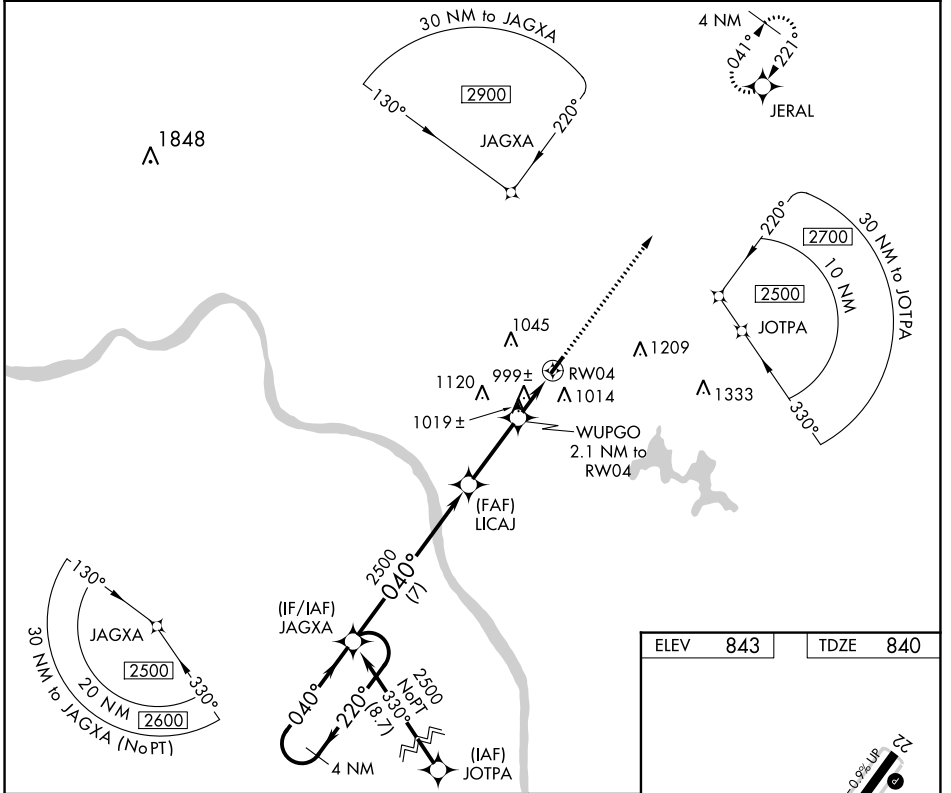
RNAV (GPS) RWY 4

CLERMONT COUNTY (I69)

⚠ Circling NA at night. Rwy 4/22 helicopter visibility reduction below 1 SM NA.
⚠ DME/DME RNP-0.3 NA. When local altimeter setting not received, use Cincinnati Muni/
 Lunken Fld altimeter setting and increase all MDA 80 feet and all Cat C visibilities 1/4 SM.

MISSED APPROACH:
 Climb to 2600 direct
 JERAL and hold.

AWOS-3 127.275	CINCINNATI APP CON 121.0 254.25	CLNC DEL 124.9	UNICOM 122.975 (CTAF) 0
--------------------------	---	--------------------------	-----------------------------------



CATEGORY	A	B	C	D
LP MDA	1300-1	460 (500-1)	1300-1 3/8 460 (500-1 3/8)	NA
LNAV MDA	1320-1	480 (500-1)	1320-1 3/8 480 (500-1 3/8)	NA
C CIRCLING	1360-1	517 (600-1)	1520-2 677 (700-2)	NA

EC-2, 28 NOV 2024 to 26 DEC 2024

EC-2, 28 NOV 2024 to 26 DEC 2024