

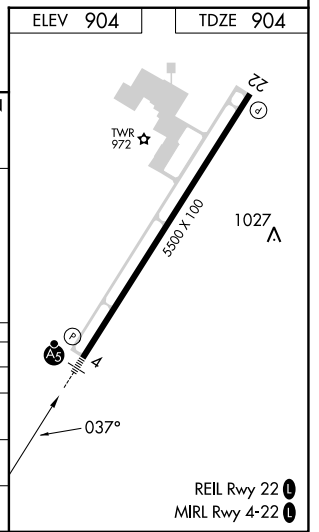
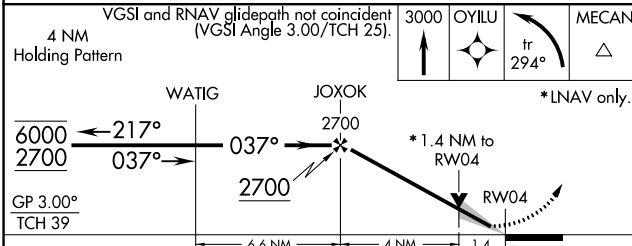
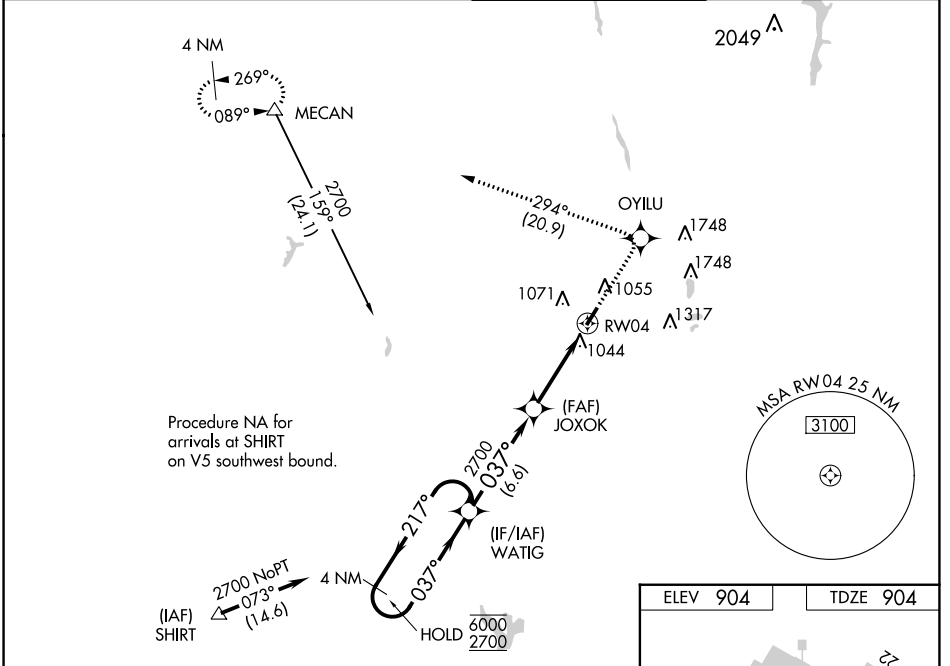
WAAS CH 90505 W04A	APP CRS 037°	Rwy Idg 5500 TDZE 904 Apt Elev 904
--	------------------------	---

RNAV (GPS) RWY 4

BOLTON FLD (TZR)

RNP APCH. ▼ For uncompensated Baro-VNAV systems, LNAV/VNAV NA below -16°C or above 54°C. For inop ALS, increase LNAV/VNAV all Cats visibility to 1 1/4 SM and LNAV Cats C/D visibility to 1 3/8 SM.	MALSR AS	MISSED APPROACH: Climb to 3000 direct OYILU and left turn on track 294° to MECAN and hold.
--	-------------	---

AWOS-3PT 135.925	COLUMBUS APP CON 134.0 279.6	BOLTON TOWER ★ 128.1 (CTAF) 0	GND CON 121.8
----------------------------	--	---	-------------------------



CATEGORY	A	B	C	D
LPV DA	1163-1/2 259 (300-1/2)			
LNAV/VNAV DA	1325-1 421 (500-1)			
LNAV MDA	1360-1/2	456 (500-1/2)	1360-7/8 456 (500-7/8)	1360-1 456 (500-1)
CIRCLING	1360-1 456 (500-1)	1380-1 476 (500-1)	1380-1 1/2 476 (500-1 1/2)	1500-2 596 (600-2)

EC-2, 28 NOV 2024 to 26 DEC 2024

EC-2, 28 NOV 2024 to 26 DEC 2024