

WAAS CH <b>86827</b> <b>W12A</b>	APP CRS <b>120°</b>	Rwy Idg TDZE <b>1452</b> Apt Elev <b>1456</b>	<b>5596</b>
--	------------------------	---	-------------

# RNAV (GPS) RWY 12

ELY MUNI (E.L.O)

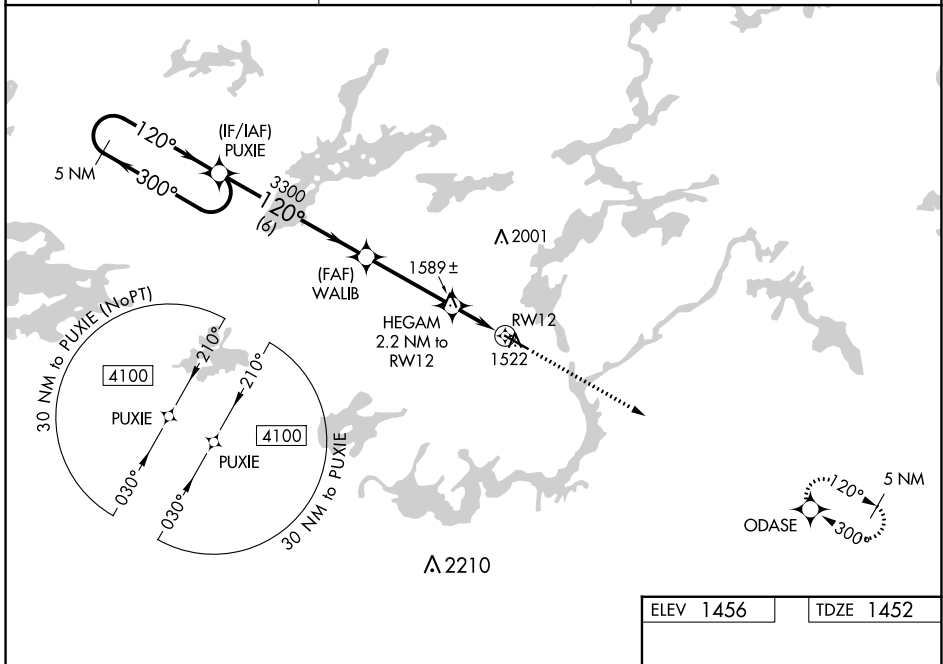
**⚠** Baro-VNAV NA when using Cook altimeter setting. For uncompensated Baro-VNAV systems, LNAV/VNAV NA below -17°C (2°F) or above 34°C (93°F). DME/DME RNP-0.3 NA. VDP NA when using Cook altimeter setting. When local altimeter setting not received, use Cook altimeter setting and increase all DA/MDA 100 feet; increase LPV visibility ¼ mile all Cats, LNAV/VNAV visibility ⅓ mile all Cats, and LNAV Cat C and D visibility ¼ mile.

MISSED APPROACH: Climb to 4100 direct ODASE and hold.

AWOS-3PT  
**132.025**

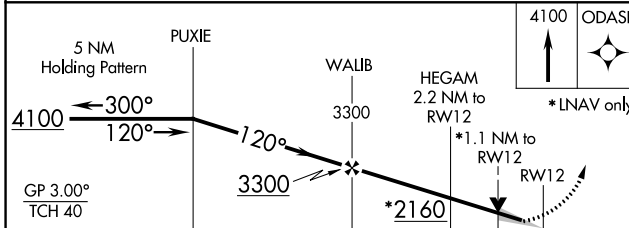
MINNEAPOLIS CENTER  
**127.9 281.45**

UNICOM  
**122.8 (CTAF) ①**



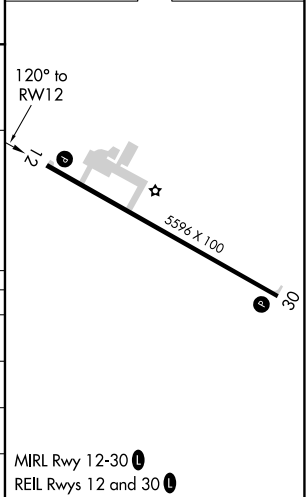
NC-1, 28 NOV 2024 to 26 DEC 2024

NC-1, 28 NOV 2024 to 26 DEC 2024



ELEV 1456	TDZE 1452
-----------	-----------

CATEGORY	A	B	C	D
LPV DA		1652-1	200 (200-1)	
LNAV/ VNAV DA		1726-1	274 (300-1)	
LNAV MDA	1840-1	388 (400-1)	1840-1 ⅛	388 (400-1 ⅛)
CIRCLING	1920-1 464 (500-1)	1940-1 484 (500-1)	1940-1 ½ 484 (500-1 ½)	2360-3 904 (1000-3)



MIRL Rwy 12-30 ①  
REIL Rwy 12 and 30 ①