

WAAS CH 93627 W30A	APP CRS 300°	Rwy Idg TDZE 1456 Apt Elev 1456	5596 1456 1456
--	------------------------	---	---

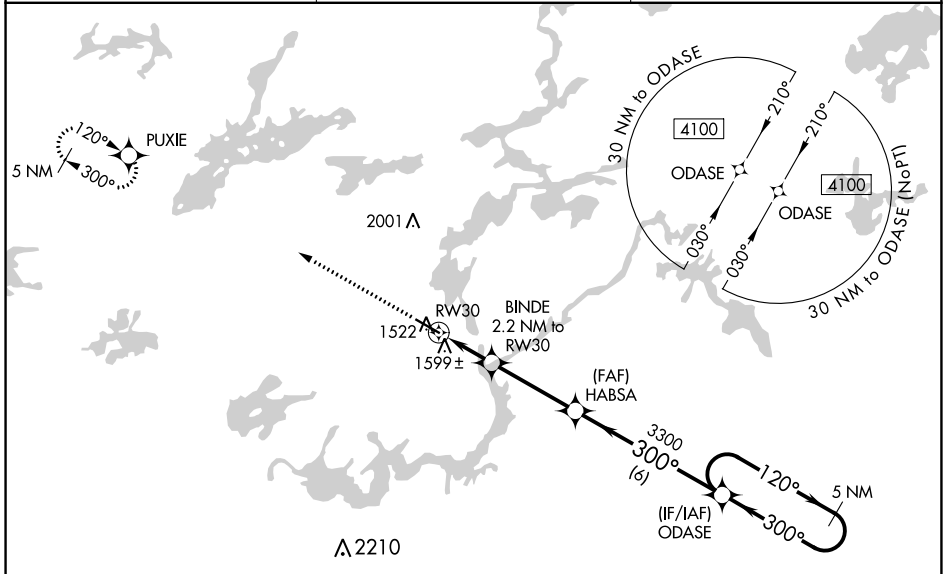
RNAV (GPS) RWY 30

ELY MUNI (E.L.O)

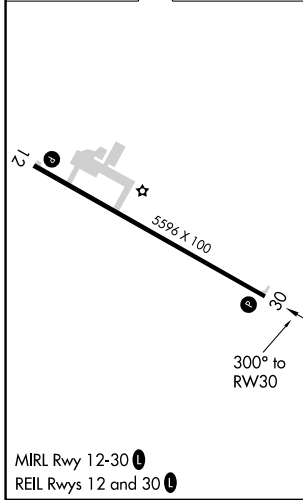
⚠ Baro-VNAV NA when using Cook altimeter setting. For uncompensated Baro-VNAV systems, LNAV/VNAV NA below -17°C (2°F) or above 34°C (93°F). DME/DME RNP-0.3 NA. Helicopter visibility reduction below 3/4 SM NA. When local altimeter setting not received, use Cook altimeter setting and increase all DA/MDA 100 feet; increase LPV visibility 1/8 mile all Cats, LNAV/VNAV visibility 3/8 mile all Cats, and LNAV Cat C/D visibility 1/4 mile.

MISSED APPROACH: Climb to 4100 direct PUXIE and hold.

AWOS-3PT 132.025	MINNEAPOLIS CENTER 127.9 281.45	UNICOM 122.8 (CTAF) 0
----------------------------	---	---------------------------------



ELEV 1456	TDZE 1456
-----------	-----------



4100	PUXIE	VGS1 and RNAV glidepath not coincident (VGS1 Angle 3.00/TCH 41).		ODASE	5 NM Holding Pattern
*LNAV only	BINDE 2.2 NM to RW30	HABSA 3300	3300	300°	120°/300° 4100
	RW30	2200*	3300	300°	GP 3.00° TCH 52
	2.2 NM	3.4 NM	6 NM		
CATEGORY	A	B	C	D	
LPV DA		1706-1	250 (300-1)		
LNAV/VNAV DA		1780-1	324 (400-1)		
LNAV MDA	1860-1	404 (500-1)	1860-1½	404 (500-1½)	
CIRCLING	1920-1 464 (500-1)	1940-1 484 (500-1)	1940-1½ 484 (500-1½)	2360-3 904 (1000-3)	