

WAAS CH 53410 W10A	APP CRS 104°	Rwy Idg TDZE Apt Elev	9490 6591 6606
--	------------------------	-----------------------------	---

RNAV (GPS) Y RWY 10

YAMPA VALLEY (HDN)

RNP APCH-GPS.

▼ Rwy 10 helicopter visibility reduction below 3/4 SM NA.
 ▲ Inop table does not apply to *LPV all Cats, LNAV/VNAV all Cats, and LNAV Cats C/D. For uncompensated Baro-VNAV systems, LNAV/VNAV NA below -28°C or above 54°C.

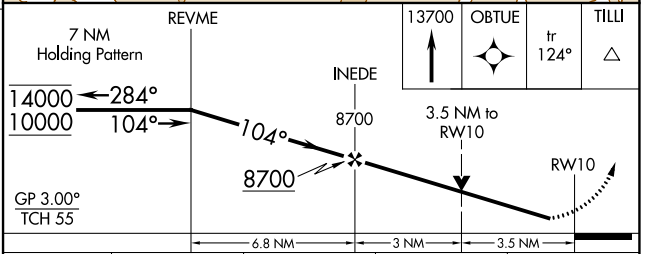
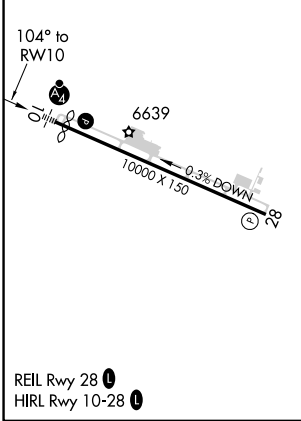
MALSF

MISSED APPROACH: Climb to 13700 direct OBTUE and on track 124° to TILLI and hold, continue climb-in-hold to 13700.
 * Missed approach requires minimum climb of 295 feet per NM to 8700.

AWOS-3 119.275	DENVER CENTER 120.475 235.975	UNICOM 123.0 (CTAF)
--------------------------	---	-------------------------------



ELEV 6606	D	TDZE 6591
-----------	----------	-----------



CATEGORY	A	B	C	D
LPV DA*		6791-3/4	200 (200-3/4)	
LPV DA		7327-13/4	736 (800-13/4)	
LNAV/VNAV DA		7966-5	1375 (1400-5)	
LNAV MDA	7760-1 1169 (1200-1)	7760-1 1/4 1169 (1200-1 1/4)	7760-3	1169 (1200-3)
C CIRCLING	7760-1 1/4 1154 (1200-1 1/4)	7760-1 1/2 1154 (1200-1 1/2)	7760-3 1154 (1200-3)	8180-3 1574 (1600-3)

SW-1, 28 NOV 2024 to 26 DEC 2024

SW-1, 28 NOV 2024 to 26 DEC 2024