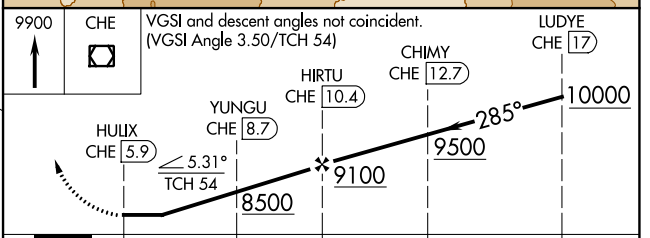
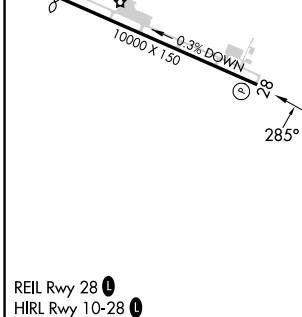
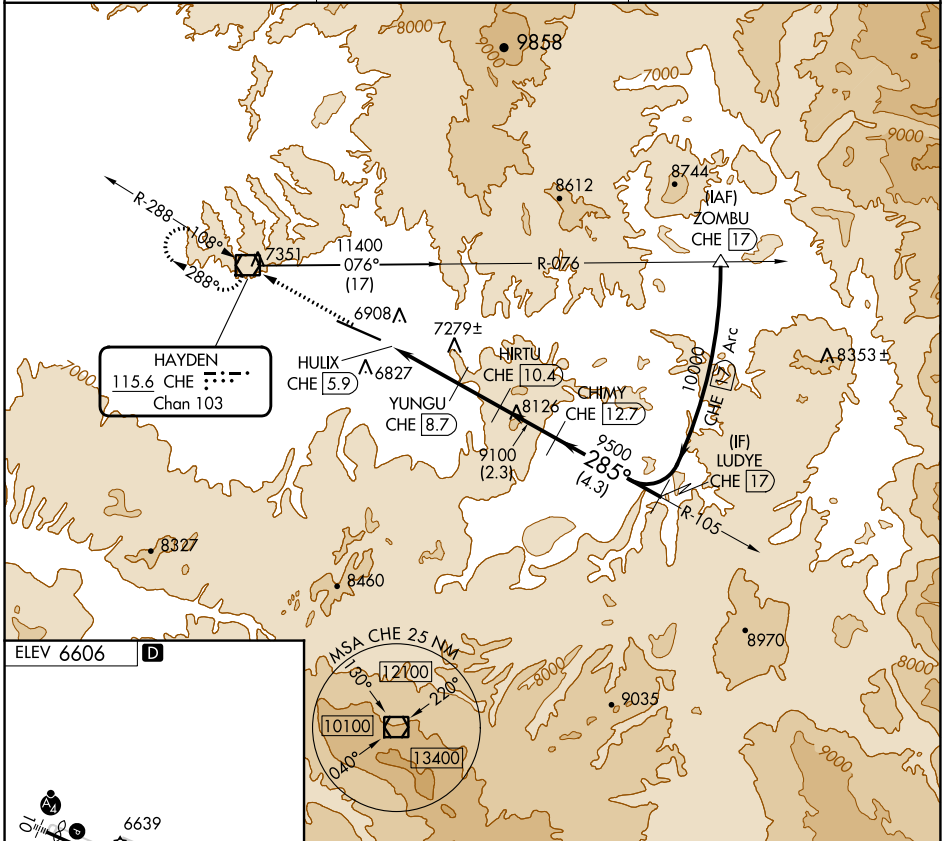


VOR/DME CHE 115.6 Chan 103	APP CRS 285°	Rwy ldg TDZE Apt Elev 6606	N/A N/A 6606
--	------------------------	--	---

VOR-B
YAMPA VALLEY (HDN)

DME required.	MISSED APPROACH: Climb to 9900 direct CHE VOR/DME and hold, continue climb-in-hold to 9900.
▼ ▲ Rwy 28 helicopter visibility reduction below ¾ SM NA.	

AWOS-3PT 119.275	DENVER CENTER 120.475 235.975	UNICOM 123.0 (CTAF) 0
----------------------------	---	---------------------------------



9900 CHE	VGSI and descent angles not coincident. (VGSI Angle 3.50/TCH 54)			
	HUIX CHE 5.9	YUNGU CHE 8.7	HIRTU CHE 10.4	CHIMY CHE 12.7
				LUDYE CHE 17
				10000
	2.8 NM	1.7 NM	2.3 NM	4.3 NM

REIL Rwy 28 0	HIRL Rwy 10-28 0			
HAYDEN, COLORADO Amdt 2 16MAY24		YAMPA VALLEY (HDN) VOR-B		
40°29'N-107°13'W				

SW-1, 28 NOV 2024 to 26 DEC 2024

SW-1, 28 NOV 2024 to 26 DEC 2024