

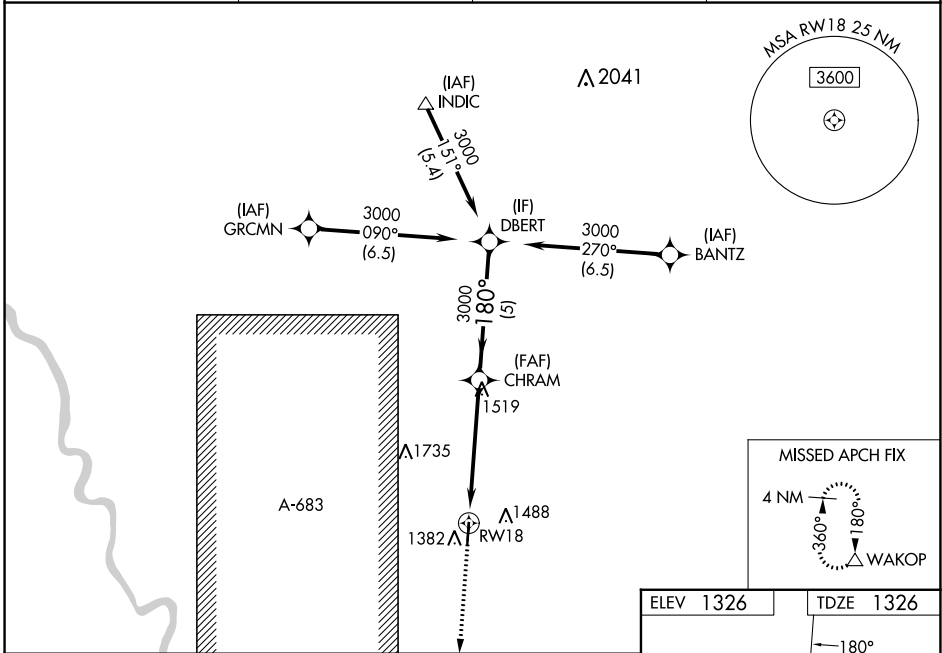
WAAS CH 70348 W18A	APP CRS 180°	Rwy Idg TDZE 1326 Apt Elev 1326	4501
--	------------------------	---	-------------

RNAV (GPS) RWY 18

AUGUSTA MUNI (3AU)

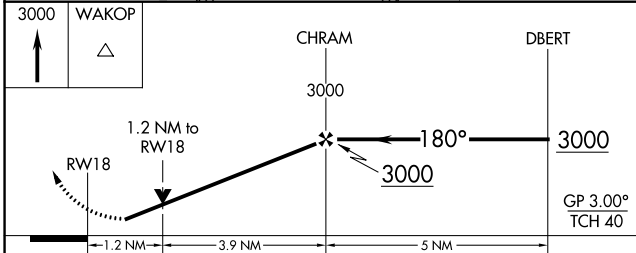
RNP APCH - GPS.	MISSED APPROACH: Climb to 3000 direct WAKOP and hold.
Rwy 18 helicopter visibility reduction below 3/4 SM NA. For uncompensated Baro-VNAV systems, LNAV/VNAV NA below -17°C or above 54°C. Baro-VNAV and VDP NA when using AAO altimeter setting. When local altimeter setting not received, use AAO altimeter setting and increase LPV DA to 1624 feet; increase LNAV/VNAV DA to 1742 feet; increase all MDAs 40 feet and LNAV visibility Cat C 1/8 SM.	

AWOS-3P 124.175	WICHITA APP CON 134.8 269.1	CLNC DEL 125.0	UNICOM 122.8 (CTAF) 0
---------------------------	---------------------------------------	--------------------------	---------------------------------



NC-2, 28 NOV 2024 to 26 DEC 2024

NC-2, 28 NOV 2024 to 26 DEC 2024



CATEGORY	A	B	C	D
LPV DA	1591-1 265 (300-1)			NA
LNAV/VNAV DA	1709-1 383 (400-1 1/8)			NA
LNAV MDA	1760-1 434 (500-1)		1760-1 1/4 434 (500-1 1/4)	NA
CIRCLING	1800-1 474 (500-1)	1820-1 494 (500-1)	1820-1 1/2 494 (500-1 1/2)	NA

