

WAAS CH <b>66005</b> <b>W07A</b>	APP CRS <b>066°</b>	Rwy Idg TDZE Apt Elev	<b>5002</b> <b>2275</b> <b>2275</b>
--	------------------------	-----------------------------	---

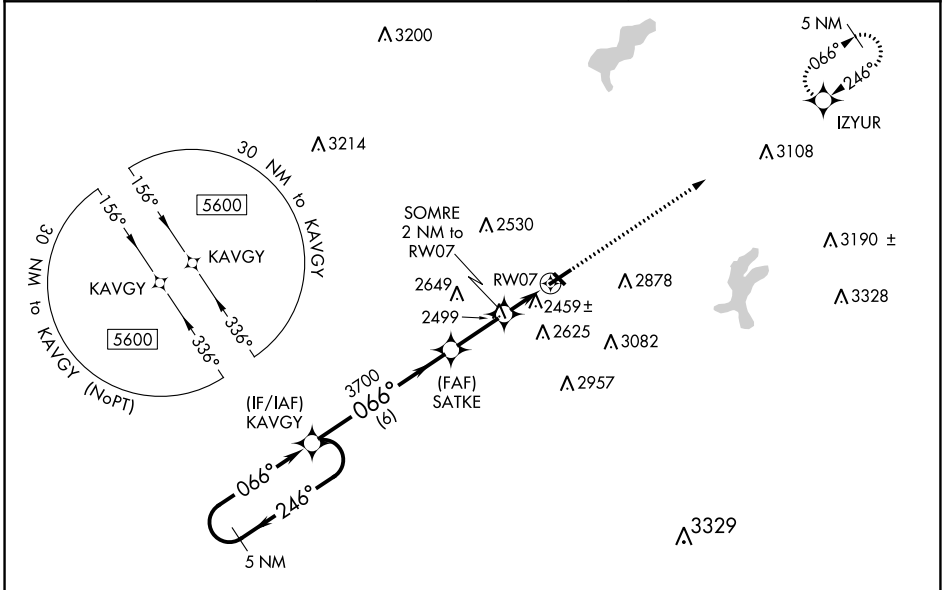
# RNAV (GPS) RWY 7

SOMERSET COUNTY (2G9)

**▼** Baro-VNAV and VDP NA when using Johnstown altimeter setting. For uncompensated Baro-VNAV systems, LNAV/VNAV NA below -19°C (-2°F) or above 53°C (128°F). DME/DME RNP-0.3 NA. Circling Rwy 25 NA at night. Circling to Rwy 14-32 NA. When local altimeter setting not received, use Johnstown altimeter setting and increase all DA 44 feet and all MDA 60 feet. Increase LPV all Cats visibility 1/8 mile and LNAV/VNAV all Cats visibility 1/4 mile.

**MISSED APPROACH:**  
Climb to 5200 direct IZYUR and hold.

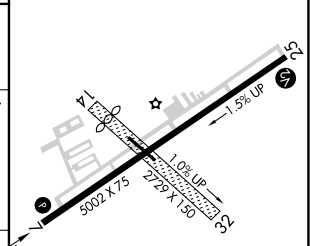
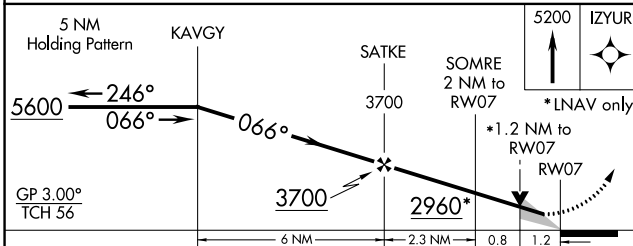
AWOS-3P <b>133.8</b>	JOHNSTOWN APP CON * <b>121.2 299.2</b>	UNICOM <b>122.8 (CTAF) 0</b>
-------------------------	---	---------------------------------



NE-4, 28 NOV 2024 to 26 DEC 2024

NE-4, 28 NOV 2024 to 26 DEC 2024

ELEV <b>2275</b>	TDZE <b>2275</b>
------------------	------------------



CATEGORY	A	B	C	D
LPV DA		2525-1	250 (300-1)	
LNAV/VNAV DA		2640-1 1/8	365 (400-1 1/8)	
LNAV MDA	2720-1	445 (500-1)	2720-1 3/8	445 (500-1 1/8)
<b>C</b> CIRCLING	2820-1 545 (600-1)	2920-1 645 (700-1)	3460-3 1185 (1200-3)	3520-3 1245 (1300-3)

MIRL Rwy 7-25  
REIL Rwy 7 and 25 **0**