

WAAS CH <b>69301</b> <b>W36A</b>	APP CRS <b>003°</b>	Rwy Idg <b>4701</b> TDZE <b>2309</b> Apt Elev <b>2313</b>
--	------------------------	---

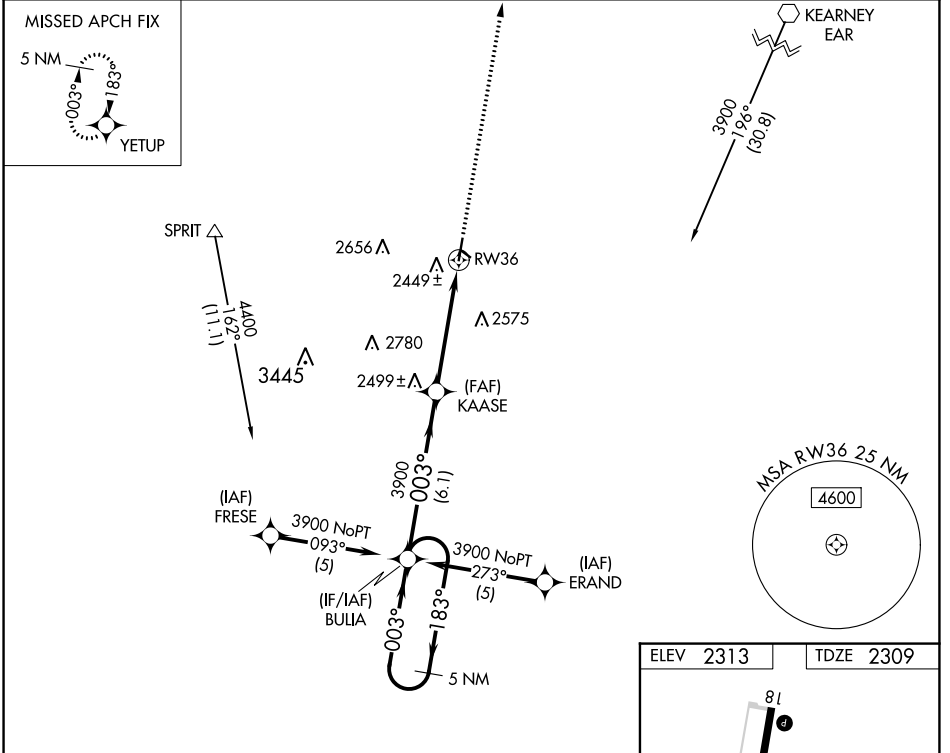
# RNAV (GPS) RWY 36

BREWSTER FLD (HDE)

**▽** DME/DME RNP-0.3 NA. When local altimeter setting not received, use Kearney altimeter setting and increase DA to 2639 feet and all MDAs 80 feet, and increase Circling Cats C/D visibility ¼ SM. VDP NA when using Kearney altimeter setting.

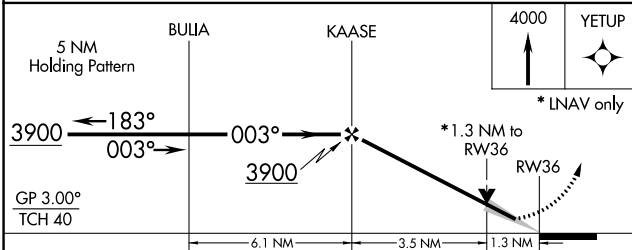
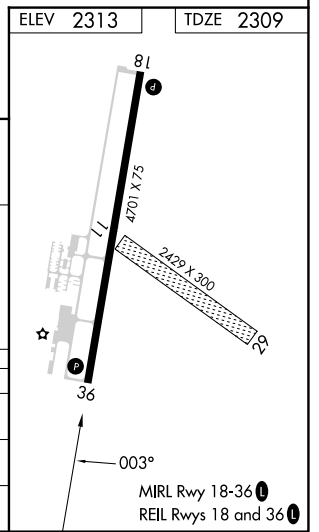
**▲** MISSED APPROACH: Climb to 4000 direct YETUP and hold.

AWOS-3 <b>121.325</b>	DENVER CENTER <b>132.7 226.675</b>	UNICOM <b>122.8 (CTAF)</b>
--------------------------	---------------------------------------	-------------------------------



NC-2, 28 NOV 2024 to 26 DEC 2024

NC-2, 28 NOV 2024 to 26 DEC 2024



CATEGORY	A	B	C	D
LPV DA	2559-1 250 (300-1)			
LNAV MDA	2760-1 451 (500-1)	2760-1¼ 451 (500-1¼)	2760-1½ 451 (500-1½)	2760-2¼ 451 (500-2¼)
CIRCLING	2840-1 527 (600-1)	3020-2 707 (800-2)	3020-2¼ 707 (800-2¼)	