

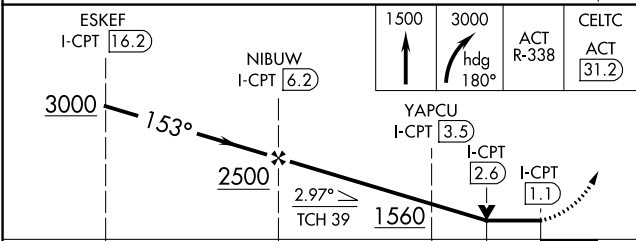
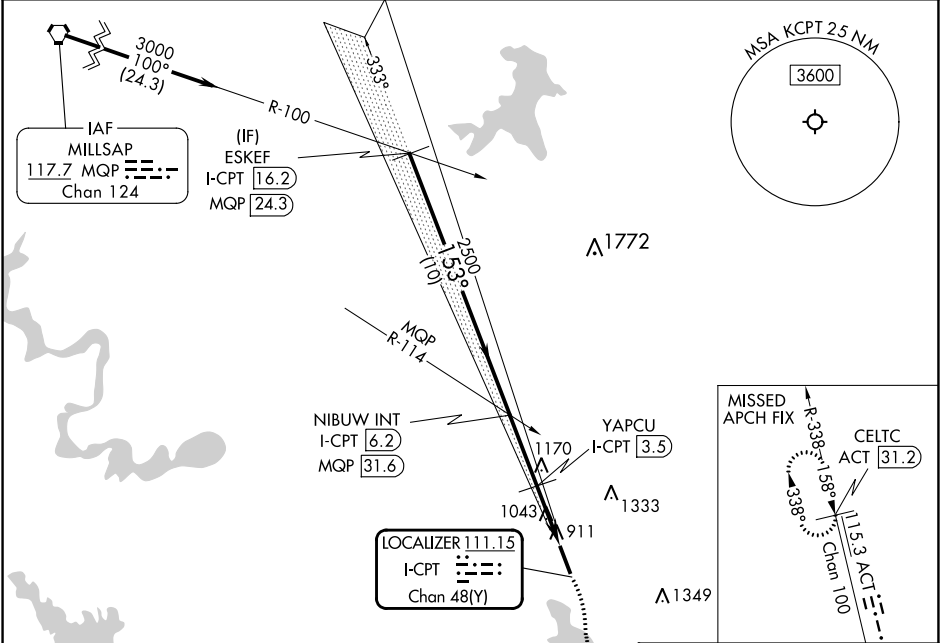
LOC I-CPT <b>111.15</b> Chan 48(Y)	APP CRS <b>153°</b>	Rwy ldg TDZE Apt Elev	<b>5512</b> <b>854</b> <b>854</b>
--	------------------------	-----------------------------	---

# LOC RWY 15

CLEBURNE RGNL (CPT)

DME required.	MISSED APPROACH: Climb to 1500 then climbing right turn to 3000 on heading 180° and ACT VORTAC R-338 to CELTC/ACT 31.2 DME.
NA Rwy 15 helicopter visibility reduction below 3/4 SM NA.	

AWOS-3 <b>119.525</b>	LONE STAR APP CON <b>135.975 379.9</b>	UNICOM <b>122.8 (CTAF)</b>
--------------------------	---	-------------------------------



CATEGORY	A	B	C	D
S-15	1360-1	506 (600-1)	1360-1 3/8	506 (600-1 3/8)
CIRCLING	1400-1	546 (600-1)	1680-2 1/2 826 (900-2 1/2)	1700-2 3/4 846 (900-2 3/4)

SC-2, 28 NOV 2024 to 26 DEC 2024

SC-2, 28 NOV 2024 to 26 DEC 2024