

SWABR ONE DEPARTURE (RNAV)

CLEBURNE, TEXAS

LONE STAR DEP CON
135.975 379.9
CTAF
122.8

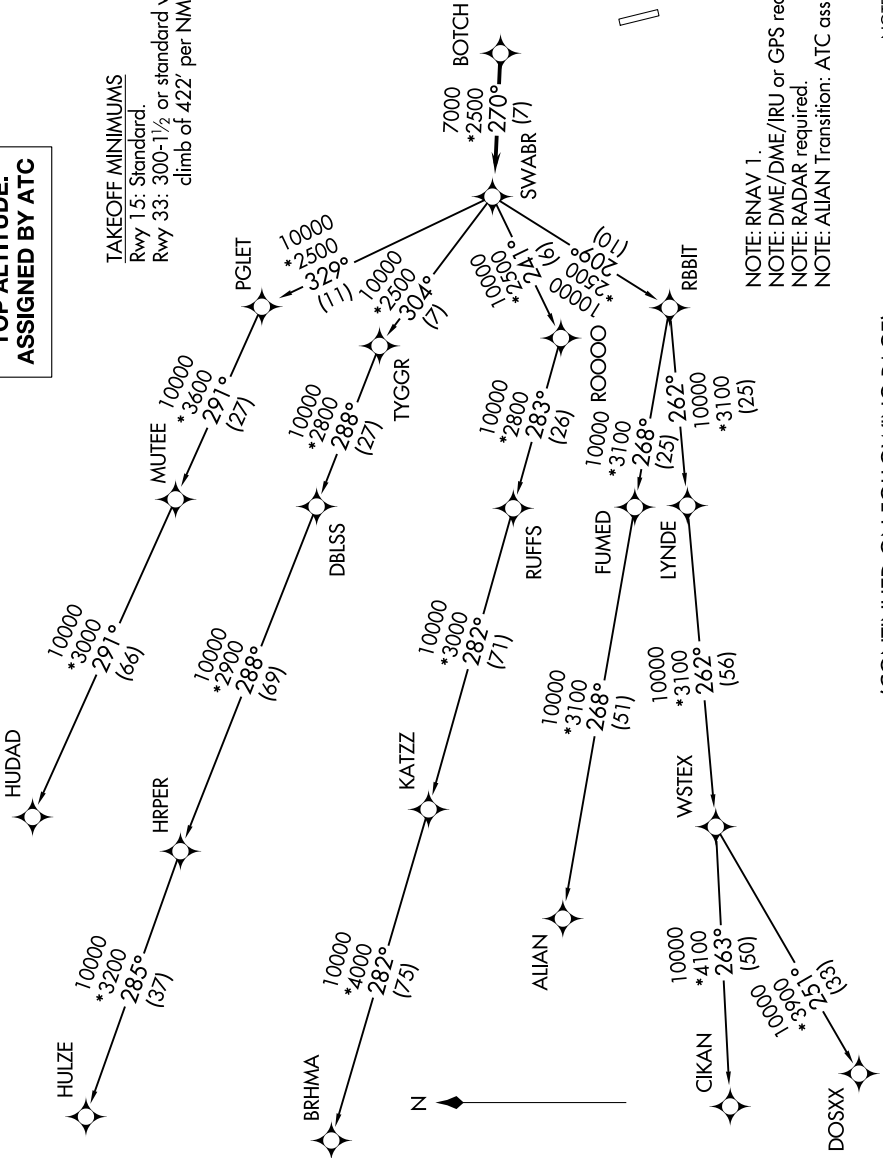
TOP ALTITUDE: ASSIGNED BY ATC

TAKEOFF MINIMUMS
Rwy 15: Standard.
Rwy 33: 300-1½ or standard with minimum
climb of 422' per NM to 1200.

NOTE: RNAV 1.
NOTE: DME/DME/IRU or GPS required.
NOTE: RADAR required.
NOTE: ALIAN Transition: ATC assigned only.

NOTE: Chart not to scale.

SC-2, 28 NOV 2024 to 26 DEC 2024



SWABR ONE DEPARTURE (RNAV)

(SWABR1 .SWABR) 24MAR22

CLEBURNE, TEXAS

CLEBURNE RGNL (CPT)

(CONTINUED ON FOLLOWING PAGE)

SC-2, 28 NOV 2024 to 26 DEC 2024