

APP CRS 180°	Rwy Idg TDZE Apt Elev	5001 1063 1080
------------------------	-----------------------------	---

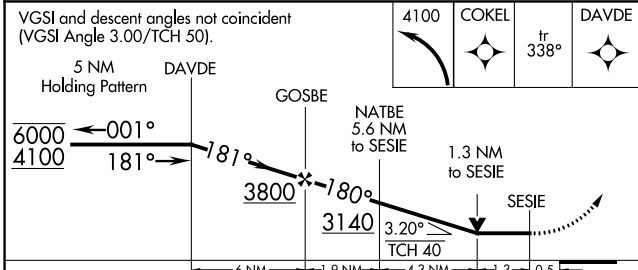
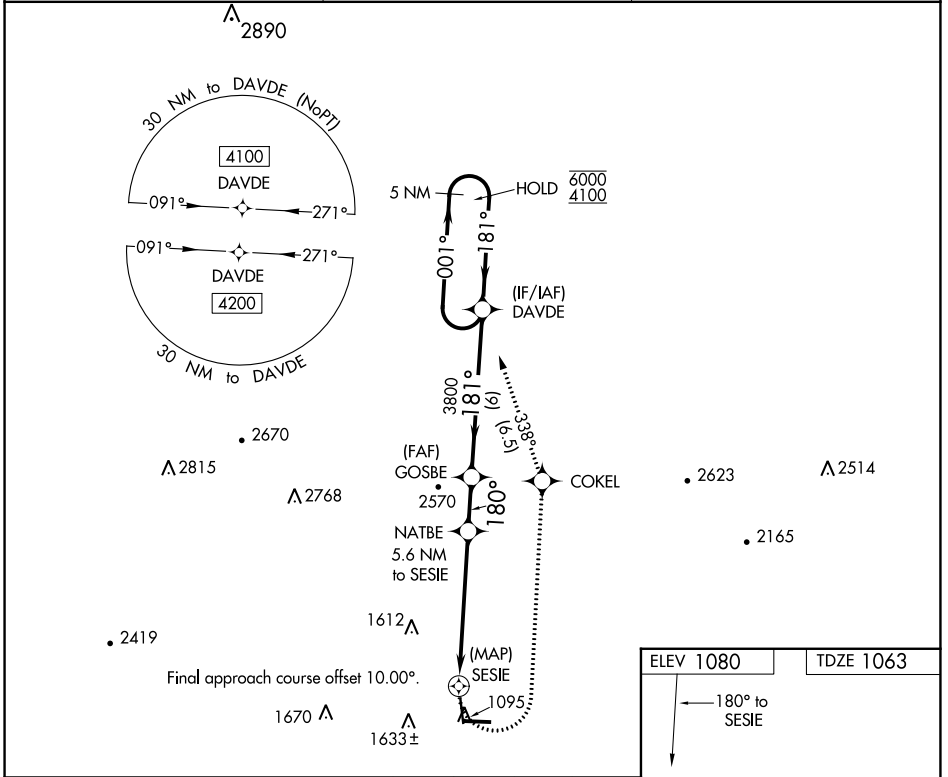
RNAV (GPS) RWY 17

MENA INTERMOUNTAIN MUNI (MEZ)

RNP APCH.
 ▼ Circling Rwy 35 NA at night.
 ▲ Rwy 17 helicopter visibility reduction below ¾ SM NA.

MISSED APPROACH: Climbing left turn to 4100 direct COKEI and track 338° to DAVDE and hold.

AWOS-3 118.025	MEMPHIS CENTER 126.1 269.0	UNICOM 122.8 (CTAF)
--------------------------	--------------------------------------	-------------------------------



ELEV 1080	TDZE 1063
-----------	-----------

MIRL Rwy 9-27 and 17-35
REIL Rwy 9, 27 and 35

CATEGORY	A	B	C	D
LNVA MDA	1660-1	597 (600-1)	1660-1¼ 597 (600-1¼)	NA
CIRCLING	1840-1 760 (800-1)	2140-1½ 1060 (1100-1½)	2220-3 1140 (1200-3)	NA

SC-1, 28 NOV 2024 to 26 DEC 2024

SC-1, 28 NOV 2024 to 26 DEC 2024