

APP CRS	Rwy Idg	<b>5020</b>
<b>175°</b>	TDZE	<b>806</b>
	Apt Elev	<b>806</b>

# RNAV (GPS) RWY 17

MIAMI RGNL (MIO)

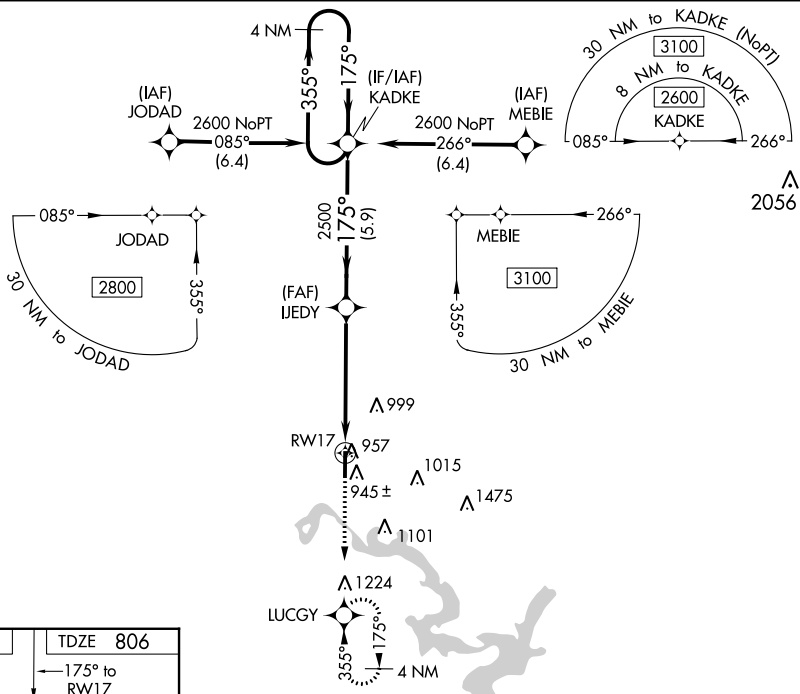
RNP APCH.

⚠ Baro-VNAV and VDP NA when using Grove altimeter setting.  
⚠ Rwy 17 helicopter visibility reduction below  $\frac{3}{4}$  SM NA. When local altimeter setting not received, use Grove altimeter setting.

ODALS

MISSED APPROACH: Climb to 2500 direct LUCGY and hold.

AWOS-3PT <b>119.675</b>	KANSAS CITY CENTER <b>128.6 282.325</b>	UNICOM <b>122.8 (CTAF) ①</b>
----------------------------	--	---------------------------------



ELEV 806 TDZE 806

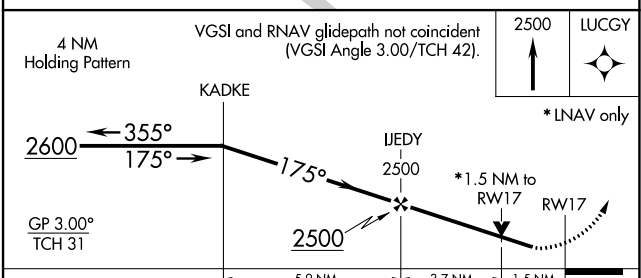
175° to RWY 17

001 X 0205

35

REIL Rwy 35

MIRL Rwy 17-35



CATEGORY	A	B	C	D
LNAV/VNAV DA	1206-1 $\frac{1}{8}$ 400 (400-1 $\frac{1}{8}$ )			NA
LNAV MDA	1320-1	514 (600-1)	1320-1 $\frac{3}{8}$ 514 (600-1 $\frac{3}{8}$ )	NA
CIRCLING	1320-1	514 (600-1)	1460-1 $\frac{3}{4}$ 654 (700-1 $\frac{3}{4}$ )	NA

SC-1, 28 NOV 2024 to 26 DEC 2024

SC-1, 28 NOV 2024 to 26 DEC 2024