

| | | | |
|---|------------------------|-----------------------------|---|
| VORTAC ENE 117.1 Chan 118 | APP CRS 088° | Rwy Idg TDZE Apt Elev | 3000 157 157 |
|---|------------------------|-----------------------------|---|

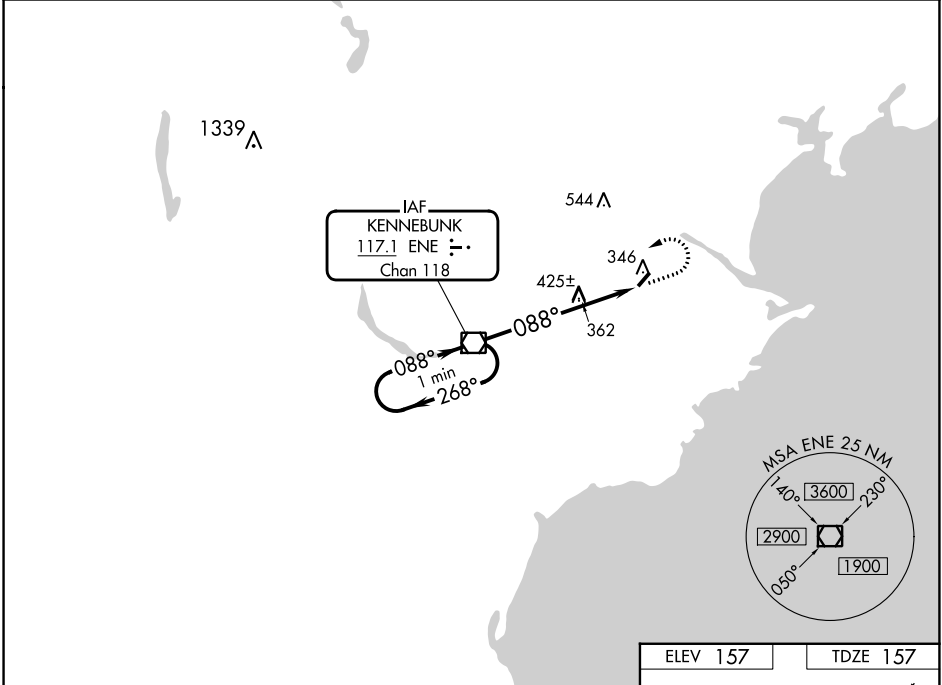
VOR RWY 6
BIDDEFORD MUNI (B19)

NA Obtain local altimeter on CTAF; when not received, use Sanford altimeter setting.
VDP NA when using Sanford altimeter setting. Circling Rwy 24 NA at night.
Rwy 6 helicopter visibility reduction below 3/4 SM NA.

MISSED APPROACH: Climb to 800, then climbing left turn to 2300 direct ENE VOR/DME and hold.

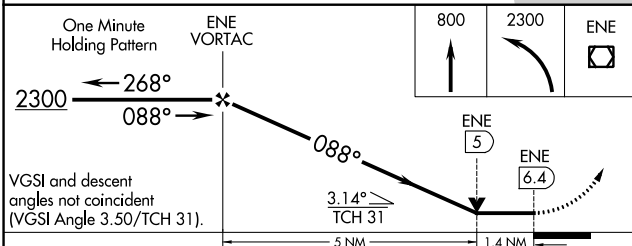
PORTLAND APP CON *
119.75 269.35

UNICOM
123.0 (CTAF) 0



NE-1, 28 NOV 2024 to 26 DEC 2024

NE-1, 28 NOV 2024 to 26 DEC 2024



| CATEGORY | A | B | C | D |
|------------------------------------|----------------------|----------------------|---|----|
| S-6 | 700-1 | 543 (600-1) | 700-1 ⁵ / ₈ 543 (600-1 ⁵ / ₈) | NA |
| CIRCLING | 700-1 543 (600-1) | 720-1 563 (600-1) | 800-1 ³ / ₄ 643 (700-1 ³ / ₄) | NA |
| SANFORD ALTIMETER SETTING MINIMUMS | | | | |
| S-6 | 740-1 | 583 (600-1) | 740-1 ³ / ₄ 583 (600-1 ³ / ₄) | NA |
| CIRCLING | 740-1 583 (600-1) | 760-1 603 (700-1) | 840-2 683 (700-2) | NA |

| | |
|---------------------------------|--------------------------|
| ELEV 157 | TDZE 157 |
| | |
| REIL Rwy 6 0 MIRL Rwy 6-24 0 | |
| FAF to MAP 6.4 NM | |
| Knots | 60 90 120 150 180 |
| Min:Sec | 6:24 4:16 3:12 2:34 2:08 |