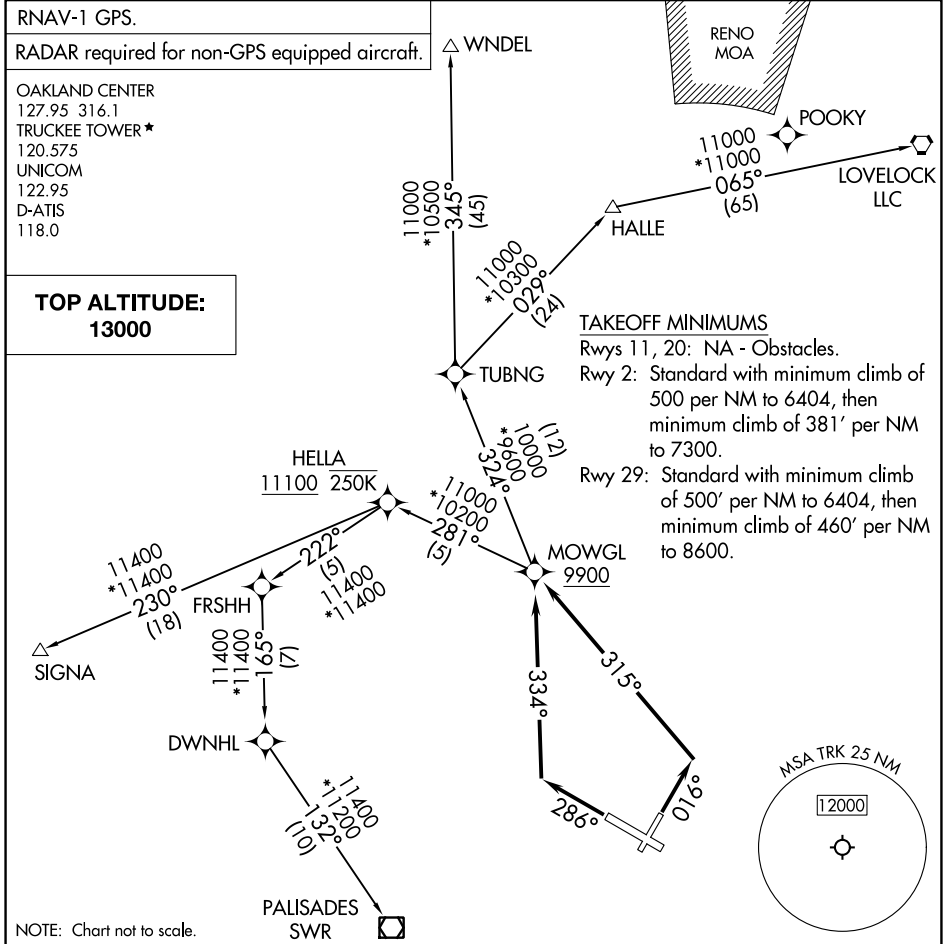


(MOWGL2.MOWGL) 23222

# MOWGL TWO DEPARTURE (RNAV)

AL-6021 (FAA)

TRUCKEE-TAHOE (TRK)  
TRUCKEE, CALIFORNIA



SW-2, 28 NOV 2024 to 26 DEC 2024

SW-2, 28 NOV 2024 to 26 DEC 2024



## DEPARTURE ROUTE DESCRIPTION

**TAKEOFF RUNWAY 2:** Climb on heading 016° to intercept course 315° to cross MOWGL at or above 9900, thence. . . .

**TAKEOFF RUNWAY 29:** Climb on heading 286° to intercept course 334° to cross MOWGL at or above 9900, thence. . . .

. . . .(transition) maintain 13000 expect filed altitude 10 minutes after departure.

- HALLE TRANSITION (MOWGL2.HALLE)
- LOVELOCK TRANSITION (MOWGL2.LLC)
- PALISADES TRANSITION (MOWGL2.SWR)
- SIGNA TRANSITION (MOWGL2.SIGNA)
- WNDL TRANSITION (MOWGL2.WNDL)

**MOWGL TWO DEPARTURE (RNAV)**  
(MOWGL2.MOWGL) 10AUG23

TRUCKEE, CALIFORNIA  
TRUCKEE-TAHOE (TRK)