

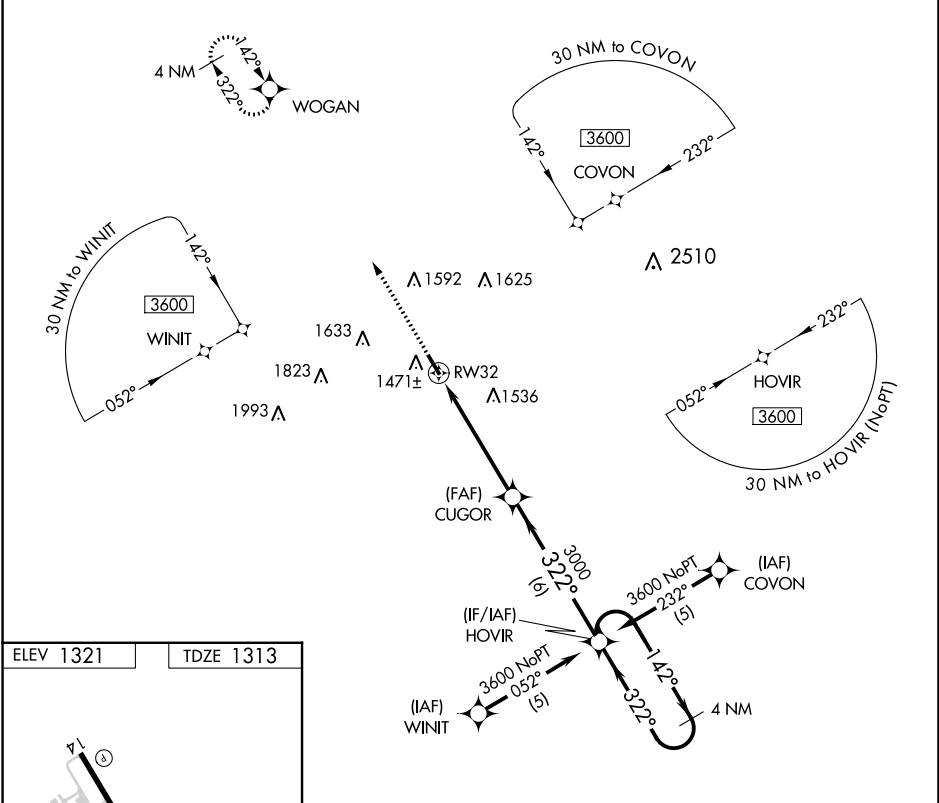
APP CRS	Rwy Idg	4209
322°	TDZE	1313
	Apt Elev	1321

RNAV (GPS) RWY 32

STEPHENVILLE CLARK RGNL (SEP)

⚠ DME/DME RNP-0.3 NA. Rwy 32 helicopter visibility reduction below 1 SM NA. Straight-in Rwy 32 NA at night, circling Rwy 32 NA at night. **MISSED APPROACH:** Climb to 3600 direct WOGAN and hold.

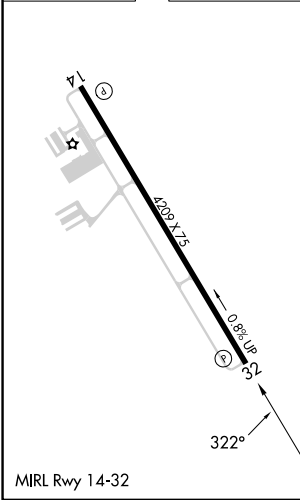
AWOS-3PT 118.075	FORT WORTH CENTER 127.15 314.0	UNICOM 122.8 (CTAF)
----------------------------	--	-------------------------------



SC-2, 28 NOV 2024 to 26 DEC 2024

SC-2, 28 NOV 2024 to 26 DEC 2024

ELEV 1321	TDZE 1313
-----------	-----------



3600 WOGAN	4 NM Holding Pattern			
CUGOR	HOVIR			
RW32	3600			
5.2 NM	6 NM			
3.04° TCH 40	142° → 3600			
322°	← 322°			
CATEGORY	A	B	C	D
LNAV MDA	1820-1	507 (500-1)	1820-1½	507 (500-1½)
CIRCLING	1820-1	499 (500-1)	2000-2 679 (700-2)	2000-2¼ 679 (700-2¼)