

APP CRS	Rwy Idg	4887
175°	TDZE	707
	Apt Elev	719

RNAV (GPS) RWY 17

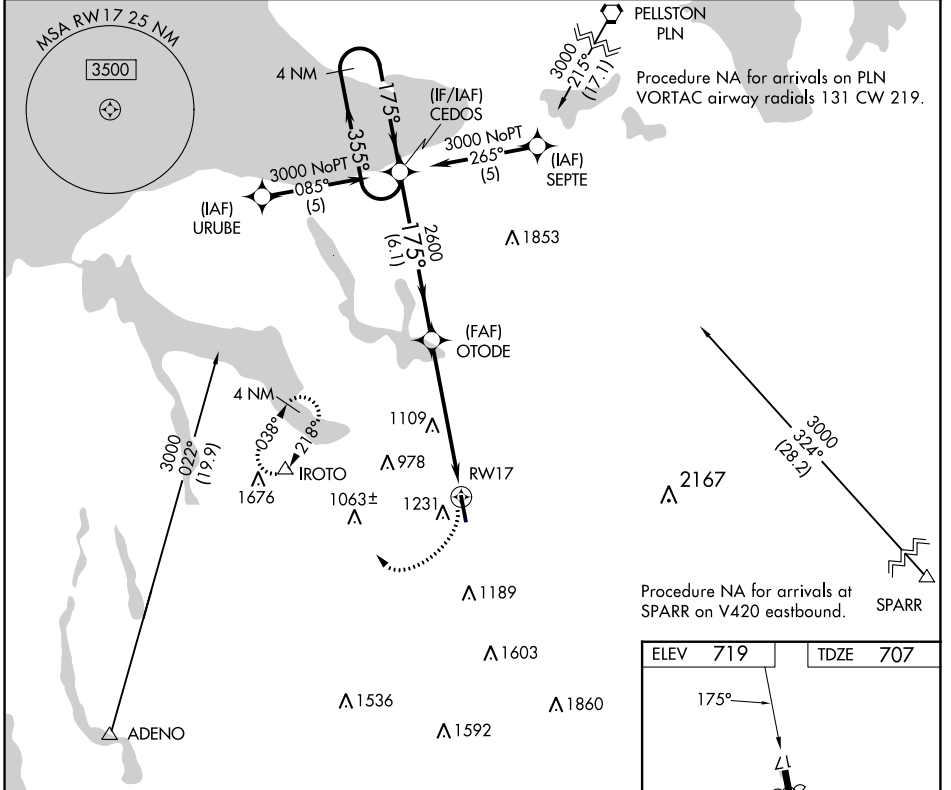
BOYNE MOUNTAIN (BFA)

RNP APCH - GPS.

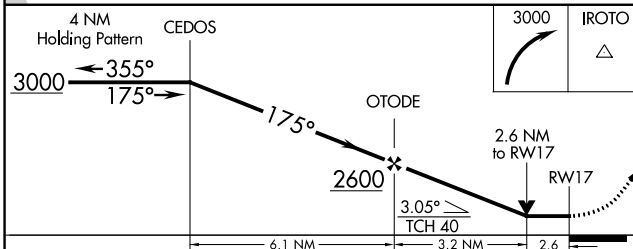
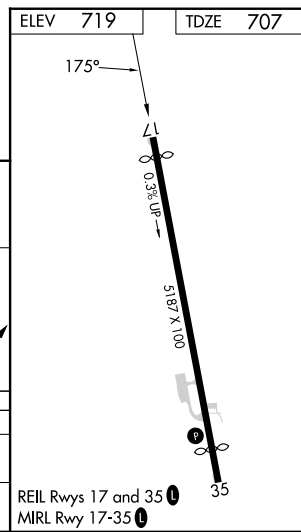
NA Circling NA west of Rwy 17-35. Rwy 17 helicopter visibility reduction below 1 SM NA. Procedure NA at night. When local altimeter setting not received, use Bellaire altimeter setting. VDP NA when using Bellaire altimeter setting.

MISSED APPROACH: Climbing right turn to 3000 direct IROTO and hold.

AWOS-3PT 118.675	MINNEAPOLIS CENTER 134.6 354.05	UNICOM 122.8 (CTAF)	122.85
----------------------------	---	-------------------------------	---------------



Procedure NA for arrivals at SPARR on V420 eastbound.



CATEGORY	A	B	C	D
LN AV MDA	1580 - 1 873 (900-1)	1580 - 1¼ 873 (900-1¼)	1580 - 2½ 873 (900-2½)	1580 - 2¾ 873 (900-2¾)
CIRCLING	1580 - 1¼ 861 (900-1¼)	1760 - 3 1041 (1100-3)	1880 - 3 1161 (1200-3)	

EC-1, 28 NOV 2024 to 26 DEC 2024

EC-1, 28 NOV 2024 to 26 DEC 2024