

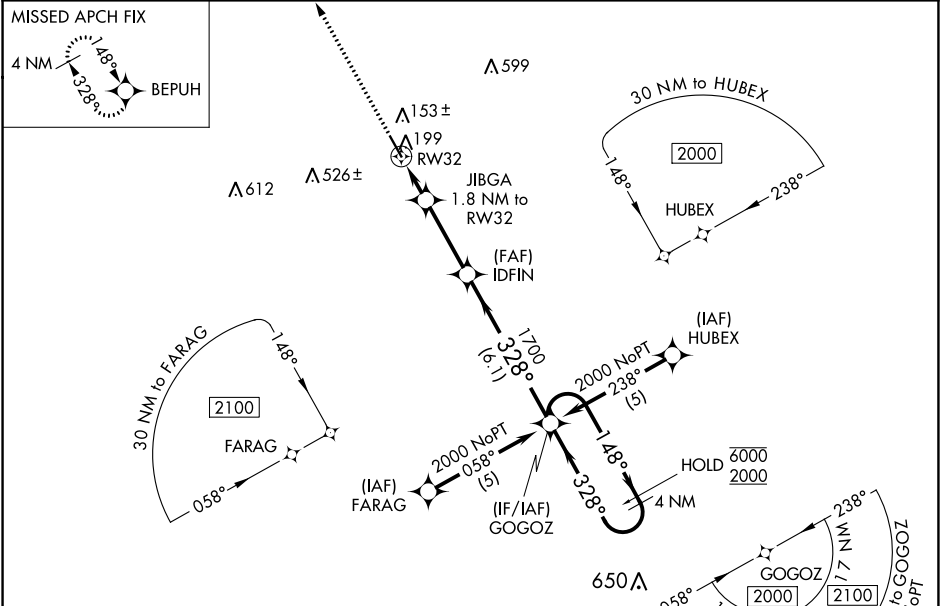
WAAS CH 58114 W32A	APP CRS 328°	Rwy Idg TDZE Apt Elev	5004 99 100
--	------------------------	-----------------------------	--

RNAV (GPS) RWY 32

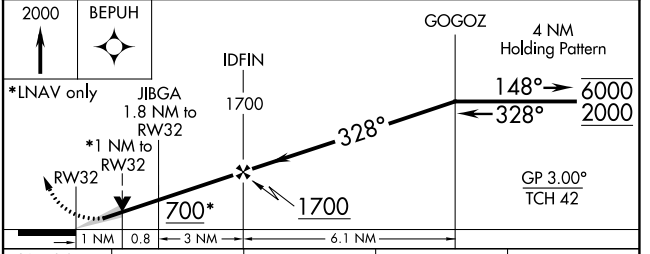
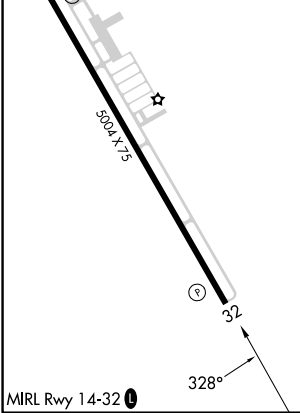
WHARTON RGNL (A.R.M)

RNP APCH.	MISSED APPROACH: Climb to 2000 direct BEPUH and hold.
For uncompensated Baro-VNAV systems, LNAV/VNAV NA below -15°C or above 54°C.	

AWOS-3 118.475	HOUSTON CENTER 128.6 360.8	UNICOM 122.7 (CTAF) ①
--------------------------	--------------------------------------	---------------------------------



ELEV 100	TDZE 99
----------	---------



CATEGORY	A	B	C	D
LPV DA		349-1	250 (300-1)	NA
LNAV/VNAV DA		399-1	300 (300-1)	NA
LNAV MDA		460-1	361 (400-1)	NA

SC-5, 28 NOV 2024 to 26 DEC 2024

SC-5, 28 NOV 2024 to 26 DEC 2024